

FusionOS Installer Instructions

This is the installation guide for the Fusion ONESolution installer. This guide provides instructions for installing, updating, and maintaining your Fusion REST web service. Each of these actions: installing, updating, or maintaining, has its own set of steps and instructions to follow. This guide explains what each of these actions does, and then guides and directs you to the steps you need to do for the action.

Configuration Checklist

Before you start the installation, go through the checklist below and fill out all the values. You will be prompted to enter this information during the install. You should also print this list and keep a copy for your records.

Item	Configuration Info	Customer's Value
1	Application ID and Key	
1a	Your App ID and App Key Note: Contact SunGard support to receive this value. This is a paired key consisting of a short (App ID) and long (App Key) encoded value.	AppID: _____ AppKey: _____
3	ONESolution settings	
3a	ONESolution domain\username	Domain: _____ User: _____
3b	OS Finance server name or IP	Finance server: _____



Contents

CONFIGURATION CHECKLIST	1
PREREQUISITES	3
PRE-START CHECKLIST	4
HARDWARE SPECIFICATIONS	4
WINDOWS SERVER AND IIS MANAGER	4
<i>IIS Manager Roles and Features</i>	5
WEBDEPLOY MUST BE INSTALLED	13
<i>For Windows Server 2012</i>	13
MICROSOFT.NET FRAMEWORK 4.0.....	14
MICROSOFT.NET FRAMEWORK 4.5.....	14
FIREWALL ACCESS	15
<i>SSL Certificate</i>	15
PCI COMPLIANCE.....	15
<i>Run IIS Crypto</i>	15
<i>Add X-Frame-Options</i>	16
INSTALLATION OPTIONS	18
TO INSTALL FOR THE FIRST TIME	19
INSTALL QUESTIONS	19
<i>Welcome</i>	19
<i>Destination Folder</i>	21
<i>Site Name</i>	22
<i>Application ID</i>	23
<i>Configuration Settings</i>	24
<i>Ready to Install</i>	25
TO UPGRADE TO A NEW VERSION	26
INSTALL QUESTIONS	26
<i>Multi-Instance Screen</i>	26
<i>Welcome</i>	27
<i>Site Information</i>	28
TO CHANGE CONFIGURATION INFORMATION	29
STARTING THE INSTALLER	29
INSTALL QUESTIONS	30
<i>Modify / Repair / Remove</i>	30
<i>Site Information</i>	31
<i>Application ID</i>	32
<i>Configuration Settings</i>	33
TO UNINSTALL	34



STARTING THE INSTALLER	34
INSTALL QUESTIONS	35
<i>Site Information</i>	35
INSTALLING FILES	36
<i>Installation</i>	36
<i>Complete</i>	36
AFTER INSTALLING.....	38
<i>Verify the Fusion service</i>	38
<i>Verify the SSL certificate</i>	40
<i>Verify the services are responding</i>	40
REST CONSOLE EXTENSION	41
TARGET	41
<i>From Fusion documentation:</i>	41
<i>In the REST Target:</i>	42
<i>Request URI</i>	42
<i>Request Method</i>	42
BODY	42
<i>Custom Headers</i>	43
<i>Passing XML data</i>	44
<i>Content Type</i>	44
<i>Request Payload</i>	45
SEND	45
RETURN.....	46
APPENDIX 1: WEB DEPLOY INSTALLATION FOR WINDOWS 2012	47
<i>Use WebPI to install Web Deploy along with its dependencies like the Web Management Service (WMSvc)</i>	47
APPENDIX 2: INSTALLING WEB DEPLOY DIRECTLY	49
<i>Installing Web Deploy directly:</i>	49
CONFIGURE A SITE FOR DELEGATED NON-ADMINISTRATOR DEPLOYMENT	50
TROUBLESHOOTING: MANUALLY SETTING CONFIGURATION VALUES.....	53
WEB.CONFIG	53

Prerequisites

This section goes over prerequisites of other programs that must be installed before running the Fusion installation. The installation will not be able to install without these already installed on the server.



Go through the following checklist before starting any installation. For instructions, press **CTRL+Click** on the underlined portion of the text, and it will guide you to the section for that requirement.

Pre-Start Checklist

Item	Check	Confirmation
1	<u>Hardware Specifications</u>	<input type="checkbox"/> Processor <input type="checkbox"/> RAM <input type="checkbox"/> Disk Space
2	<u>Windows Server and IIS Manager</u>	
2a	Windows 2012 Server with IIS 8	<input type="checkbox"/> Windows 2012 / IIS 8
2b	<u>WebDeploy must be</u> installed	<input type="checkbox"/> Web Deploy installed
3	<u>Microsoft.NET Framework 4.0</u> is installed	<input type="checkbox"/> .NET 4.0
4	<u>Microsoft.NET Framework 4.5</u> is installed	<input type="checkbox"/> .NET 4.5
5	<u>Firewall</u> access	
5a	The server must be externally accessible, unless being queried by internal only resources.	<input type="checkbox"/> DMZ or NAT
5b	Configure IIS with a SSL certificate	<input type="checkbox"/> SSL Certificate
5c	Open ports 443 to the Internet	<input type="checkbox"/> Internet Ports

Hardware Specifications

Recommended hardware specifications:

- Windows 2012 64 bit
- 2 GHz processor (2 processors)
- 6 GB RAM
- 60 GB disk space

Windows Server and IIS Manager

IIS Manager should already be installed on the windows server as part of the operating system. The table below lists the valid operating systems (OS) and IIS version required. Click on the Windows OS name in the table to go to the IIS install instructions for the operating system. You can use this information to verify that IIS Manager is installed and setup correctly.

Windows OS	IIS version required
Windows Server 2012	IIS 8

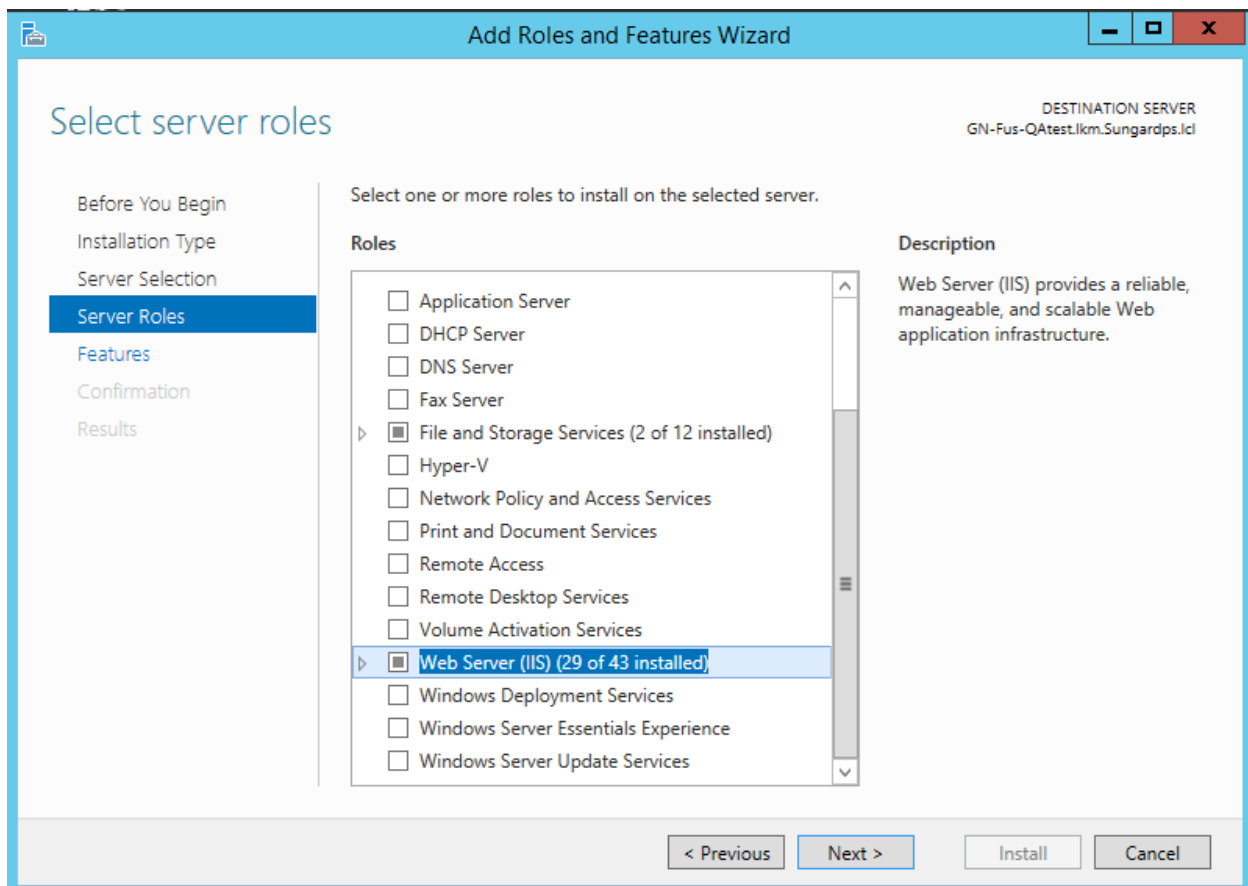


IIS Manager Roles and Features

During the IIS installation, make sure to enable the following roles and features:

If this is the first time IIS is installed on the server, select the Web Server role.

- Roles: Web Server

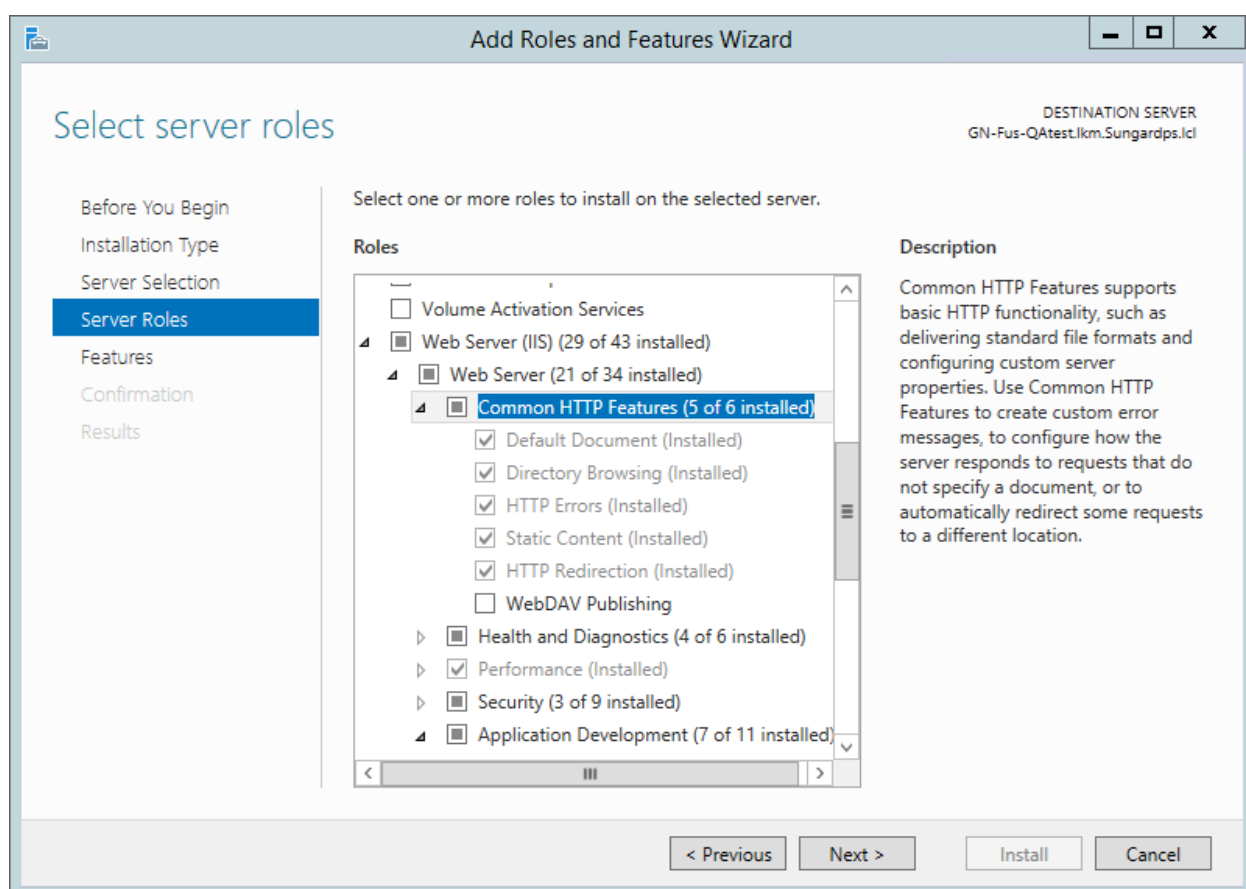




Select the following options under Web Server.

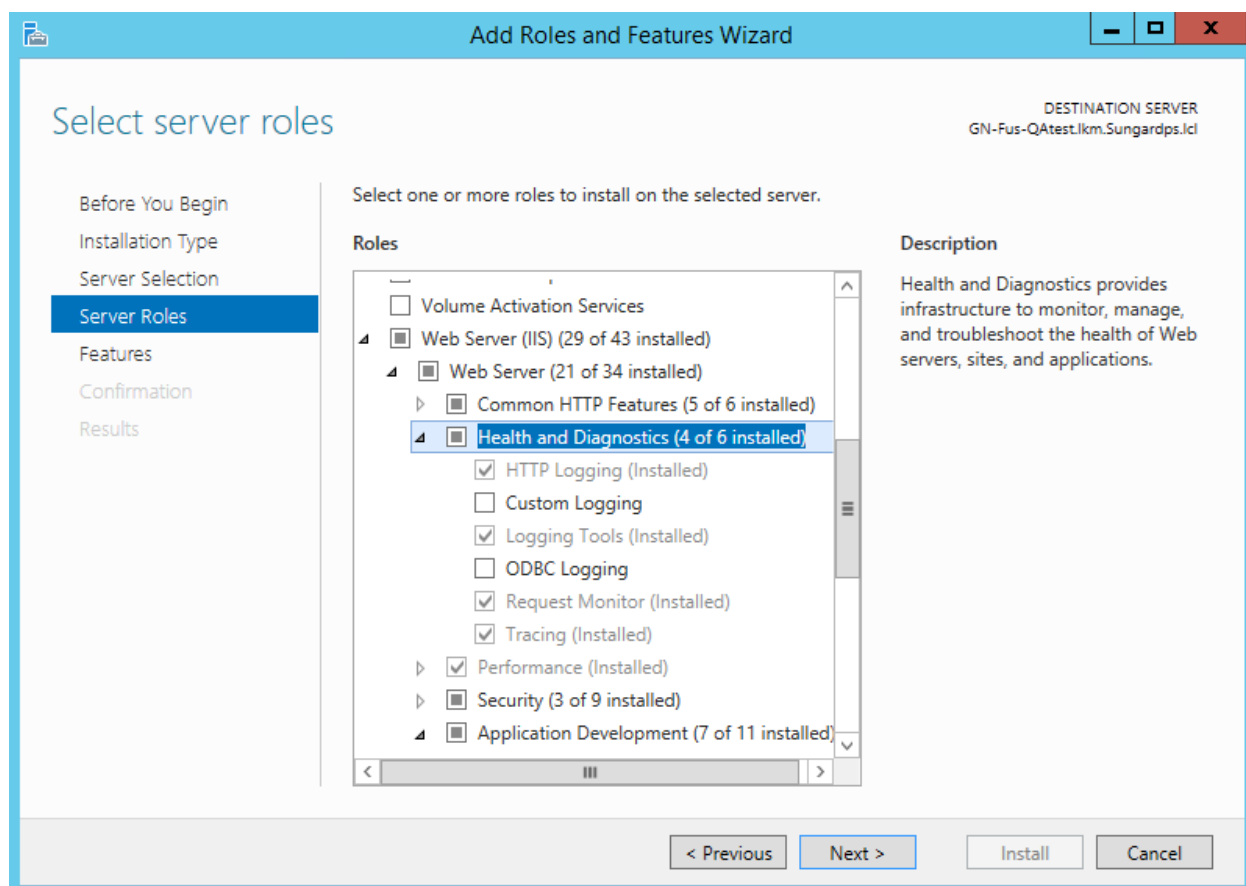
Note: If this is the first time you are installing IIS, these options may not be available until after the Features dialog, which comes next. After selecting the features, it will prompt you to select the Web Server settings that are displayed here.

- Roles: Web Server (IIS) > Web Server > Common HTTP Features
 - Default Document
 - Directory Browsing
 - HTTP Errors
 - Static Content
 - HTTP Redirection





- Roles: Web Server (IIS) > Web Server > Health and Diagnostics
 - HTTP Logging
 - Logging Tools
 - Request Monitor
 - Tracing





- Roles: Web Server (IIS) > Web Server > Performance
 - Static Content Compression
 - Dynamic Content Compression

DESTINATION SERVER
GN-Fus-QAtest.lkm.Sungardps.lcl

Select server roles

Before You Begin
Installation Type
Server Selection
Server Roles
Features
Confirmation
Results

Select one or more roles to install on the selected server.

Roles

- Volume Activation Services
- Web Server (IIS) (29 of 43 installed)
 - Web Server (21 of 34 installed)
 - Common HTTP Features (5 of 6 installed)
 - Health and Diagnostics (4 of 6 installed)
 - Performance (Installed)
 - Static Content Compression (Installed)
 - Dynamic Content Compression (Installed)
 - Security (3 of 9 installed)
 - Application Development (7 of 11 installed)
 - .NET Extensibility 3.5 (Installed)
 - .NET Extensibility 4.5 (Installed)
 - Application Initialization
 - ASP

Description

Performance provides infrastructure for output caching by integrating the dynamic output-caching capabilities of ASP.NET with the static output-caching capabilities that were present in IIS 6.0. IIS also lets you use bandwidth more effectively and efficiently by using common compression mechanisms such as Gzip and Deflate.

< Previous Next > Install Cancel



- Roles: Web Server (IIS) > Web Server > Security
 - Request Filtering
 - Basic Authentication
 - Windows Authentication

DESTINATION SERVER
GN-Fus-QAtest.lkm.Sungardps.lcl

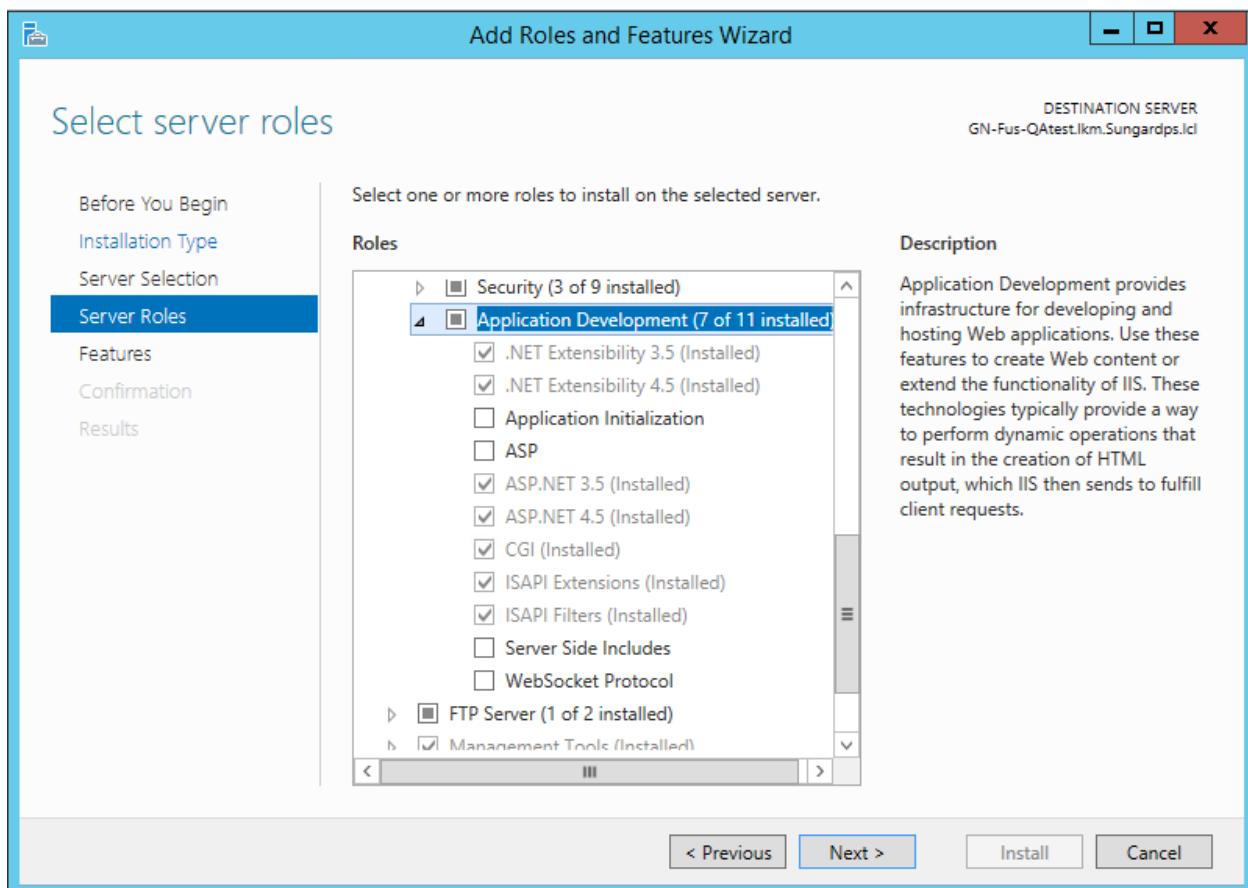
Select one or more roles to install on the selected server.

Roles	Description
<input checked="" type="checkbox"/> Health and Diagnostics (4 of 6 installed)	
<input checked="" type="checkbox"/> Performance (Installed)	
<input checked="" type="checkbox"/> Security (3 of 9 installed)	Security provides infrastructure for securing the Web server from users and requests. IIS supports multiple authentication methods. Pick an appropriate authentication scheme based upon the role of the server. Filter all incoming requests, rejecting without processing requests that match user defined values, or restrict requests based on originating address space.
<input checked="" type="checkbox"/> Request Filtering (Installed)	
<input checked="" type="checkbox"/> Basic Authentication (Installed)	
<input type="checkbox"/> Centralized SSL Certificate Support	
<input type="checkbox"/> Client Certificate Mapping Authentication	
<input type="checkbox"/> Digest Authentication	
<input type="checkbox"/> IIS Client Certificate Mapping Authentication	
<input type="checkbox"/> IP and Domain Restrictions	
<input type="checkbox"/> URL Authorization	
<input checked="" type="checkbox"/> Windows Authentication (Installed)	
<input checked="" type="checkbox"/> Application Development (7 of 11 installed)	
<input checked="" type="checkbox"/> .NET Extensibility 3.5 (Installed)	
<input checked="" type="checkbox"/> .NET Extensibility 4.5 (Installed)	

< Previous Next > Install Cancel



- Roles: Web Server (IIS) > Web Server > Application Development
 - .NET Extensibility 4.5
 - ASP.NET (Windows Server 2008)
 - ASP.NET 4.5 (Windows Server 2012)
 - Checking ASP.NET 4.5 will prompt to include the following pre-requisites
 - .NET Extensibility 4.5
 - ISAPI Extensions
 - ISAPI Filters
 - CGI
 - ISAPI Extensions
 - ISAPI Filters



.NET Extensibility 3.5 and ASP.NET 3.5 are not required.



- Roles: Web Server (IIS) > Management Tools
 - IIS Management Console
 - IIS Management Scripts and Tools

DESTINATION SERVER
EGQA-FUSTEST.DEVOPS.LCL

Select role services

Before You Begin
Installation Type
Server Selection
Server Roles
Features
Web Server Role (IIS)
Role Services
Confirmation
Results

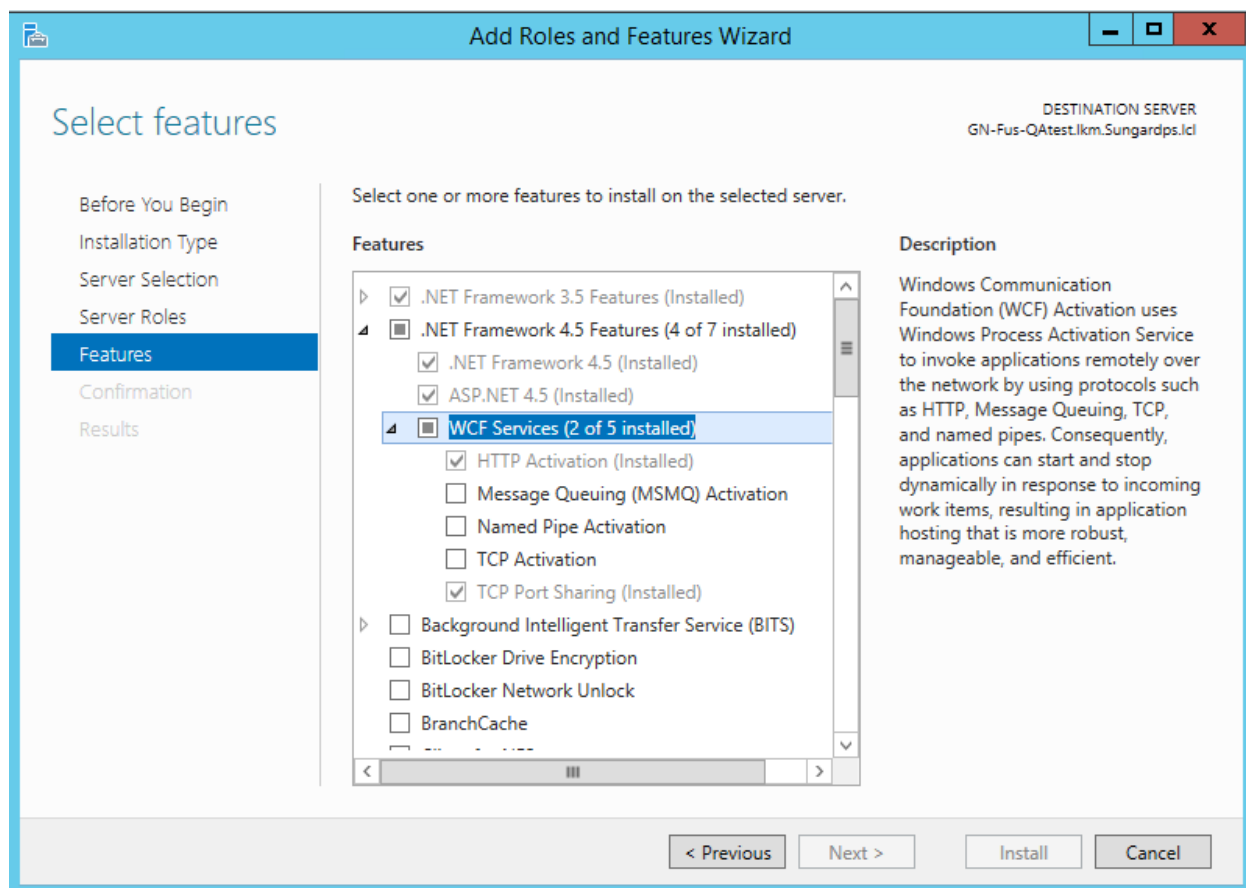
Select the role services to install for Web Server (IIS)

Role services	Description
<input checked="" type="checkbox"/> Security	IIS Management Console provides infrastructure to manage IIS 8 by using a user interface. You can use the IIS management console to manage a local or remote Web server that runs IIS 8. To manage SMTP, you must install and use the IIS 6 Management Console.
<input checked="" type="checkbox"/> Request Filtering	
<input checked="" type="checkbox"/> Basic Authentication	
<input type="checkbox"/> Centralized SSL Certificate Support	
<input type="checkbox"/> Client Certificate Mapping Authentication	
<input type="checkbox"/> Digest Authentication	
<input type="checkbox"/> IIS Client Certificate Mapping Authentication	
<input type="checkbox"/> IP and Domain Restrictions	
<input type="checkbox"/> URL Authorization	
<input type="checkbox"/> Windows Authentication	
<input checked="" type="checkbox"/> Application Development	
<input type="checkbox"/> FTP Server	
<input type="checkbox"/> FTP Service	
<input type="checkbox"/> FTP Extensibility	
<input checked="" type="checkbox"/> Management Tools	
<input checked="" type="checkbox"/> IIS Management Console	
<input type="checkbox"/> IIS 6 Management Compatibility	
<input checked="" type="checkbox"/> IIS Management Scripts and Tools	
<input type="checkbox"/> Management Service	

< Previous Next > Install Cancel



- Features: .NET Framework 4.5 Features > WCF Services > HTTP Activation



Return to [Pre-Start Checklist](#)



WebDeploy must be installed

Web Deploy (msdeploy.exe) is used to deploy web applications to IIS. It is an IIS extension that is downloaded and installed separately. It should be located in one of the folders below if it is installed on your machine.

For Windows Server 2012

C:\Program Files\IIS\Microsoft Web Deploy V3\msdeploy.exe

C:\Program Files (x86)\IIS\Microsoft Web Deploy V3\ msdeploy.exe

If it is not installed follow the instructions for downloading and installing in the Appendix.

[Appendix 1: Web Deploy installation for Windows 2012](#)

Return to [Pre-Start Checklist](#)



Microsoft.NET Framework 4.0

Microsoft .NET Framework 4.0 is required for eBill presentment (CX) and permit printing (BP). It should already be included on Windows 8 or Windows 2012 servers, but it may need to be downloaded on earlier versions. You can download Microsoft .NET Framework 4.0 from the Microsoft Download Center: [Microsoft .NET 4.0 Download](#)

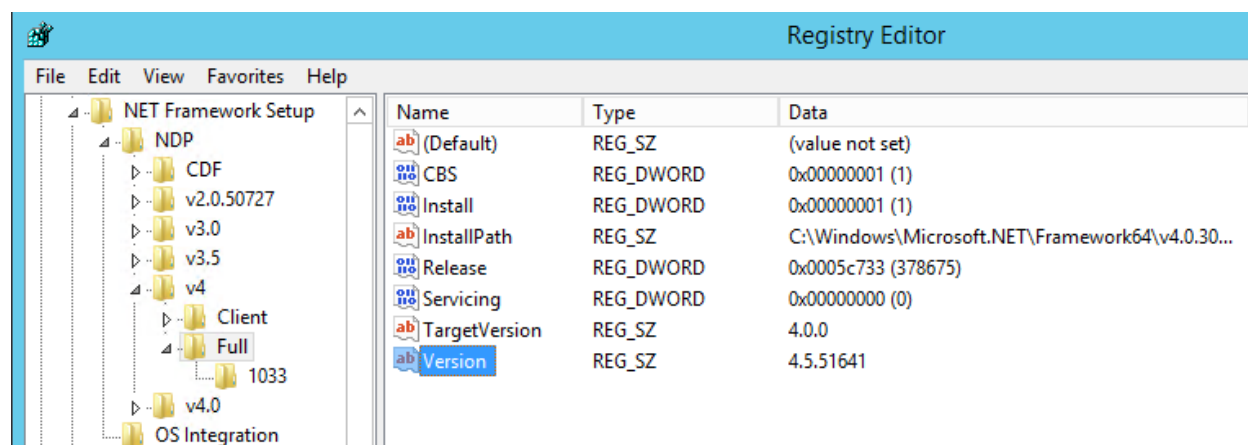
Microsoft.NET Framework 4.5

Microsoft .NET Framework 4.0 is required. It should already be included on Windows 8 or Windows 2012 servers, but it may need to be downloaded on earlier versions. You can download Microsoft .NET Framework 4.5.1 from the Microsoft Download Center: [Microsoft .NET 4.5.1 Download](#)

You can verify what .NET version you have installed by checking the registry key:

HKEY_LOCAL_MACHINE\SOFTWARE\Microsoft\net Framework Setup\NDP\v4\Full\Version

Any 4.5 version should be sufficient.



Return to [Pre-Start Checklist](#)



Firewall access

Clients will need to open the identified ports on their server. This is used by the applications to access the services over the internet.

Internet Ports:443

SSL Certificate

Click the link below for instructions on how to create a SSL Certificate for IIS.

<http://www.iis.net/learn/manage/configuring-security/how-to-set-up-ssl-on-iis>

PCI compliance

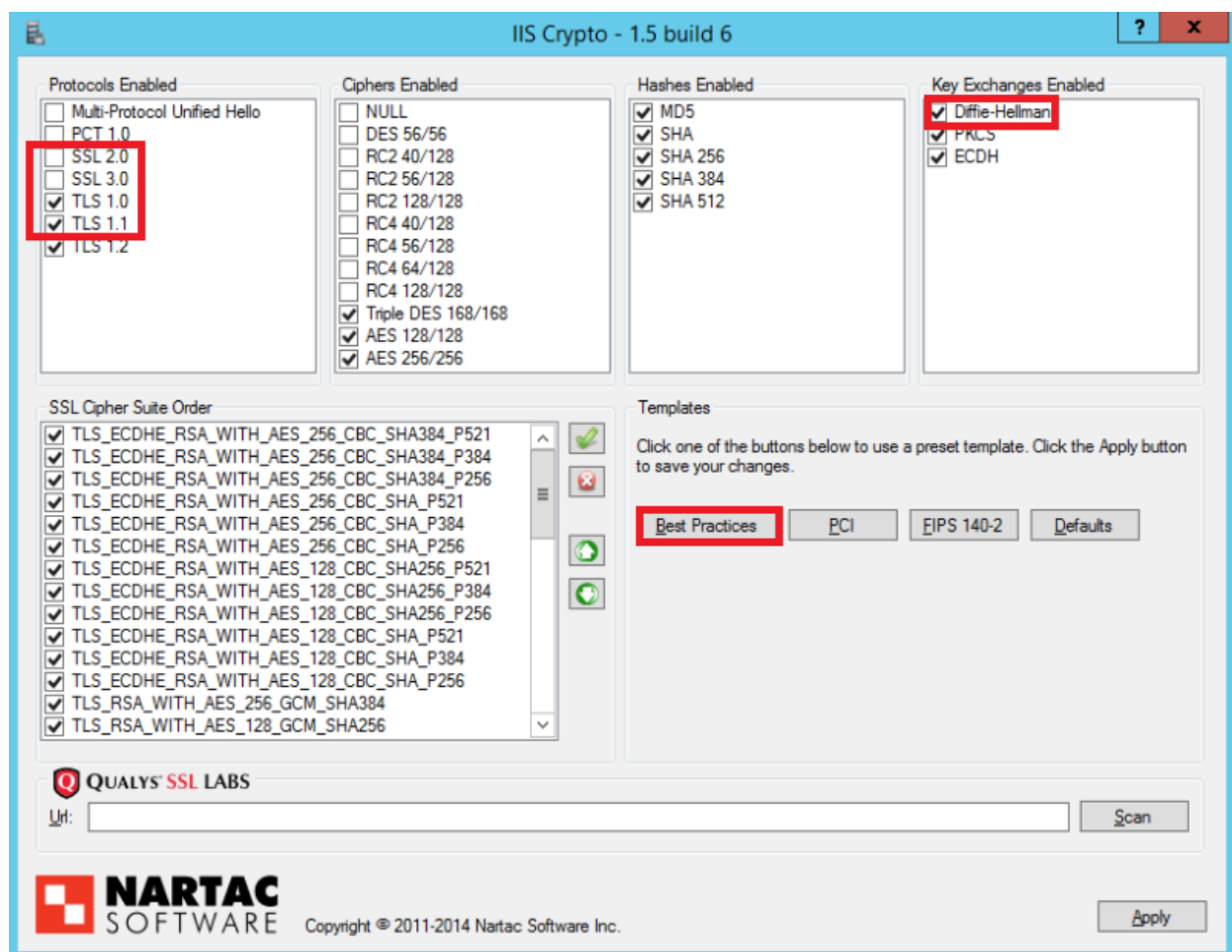
For IIS to meet PCI compliance you will need to take the following steps.

Run IIS Crypto

The latest PCI security standards requires SSL v3 and TLS 1.0 protocols to not be used. IIS should be using TLS 1.2.

Download [IIS Crypto](#) from [NarTac](#). It's a free download, (but we cannot endorse or support it).

1. Select Best Practices
2. Disable DH
3. Disable all but TLS 1.2



Add X-Frame-Options

The X-Frame-Options header can be used to prevent framesniffing techniques. See <https://support.microsoft.com/en-us/kb/2694329> for more information.

1. Open Internet Information Services (**IIS**) **Manager**.
2. In the **Connections** pane on the left side, expand the **Sites** folder and select **FusionServices**
3. Double-Click the **HTTP Response Headers** icon in the feature list in the middle.
4. In the **Actions** pane on the right side, click **Add**.
5. In the dialog box that appears, type **X-Frame-Options** in the Name field, and type **SAMEORIGIN** in the Value field.
6. Click **OK** to save your changes.



The screenshot shows the IIS Manager interface. The breadcrumb path is: SPSLKMFLUSION > Sites > Default Web Site > FusionServices. The left-hand 'Connections' tree shows the site structure. The main pane is titled 'HTTP Response Headers' and contains a table of headers. The 'X-Frame-Options' header is selected, showing a value of 'SAMEORIGIN' and an entry type of 'Inherited'. The 'X-Powered-By' header has a value of 'ASP.NET' and an entry type of 'Inherited'. An 'Actions' pane on the right lists options like 'Add...', 'Set Common Headers...', 'Edit...', 'Remove', 'Help', and 'Online Help'.

Name	Value	Entry Type
X-Frame-Options	SAMEORIGIN	Inherited
X-Powered-By	ASP.NET	Inherited

Return to [Pre-Start Checklist](#)



Installation Options

Click here: [To install for the first time](#)

Use this option if this is the first time you are installing Fusion on the server.

Click here: [To upgrade to a new version](#)

Use this option if you already have a version of Fusion installed, and you want to upgrade it to a new version.

Click here: [To change configuration information](#)

Use this option to change the configuration values after Fusion is already installed. I.e., changing the iSeries password or adding an AppID.

Click here: [To uninstall](#)

Use this option to uninstall and remove the FusionOS web service.



To install for the first time

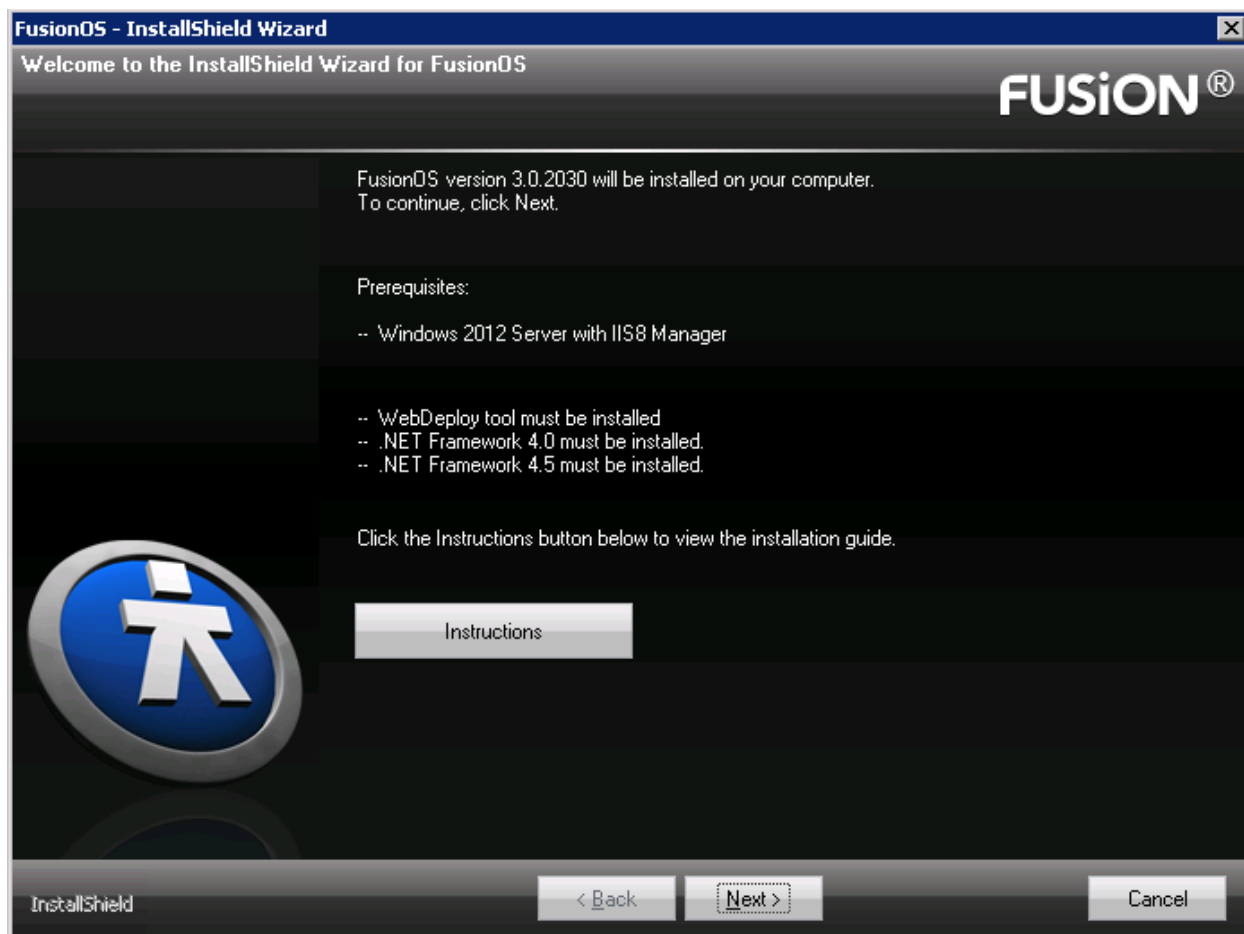
If you are installing Fusion for the first time on the server, this section guides you through the steps required.

Install questions

The installer displays screens prompting you for the information you gathered in your [Configuration Checklist](#). This section guides you through the screens and instructs you about how to provide the required information.

Welcome

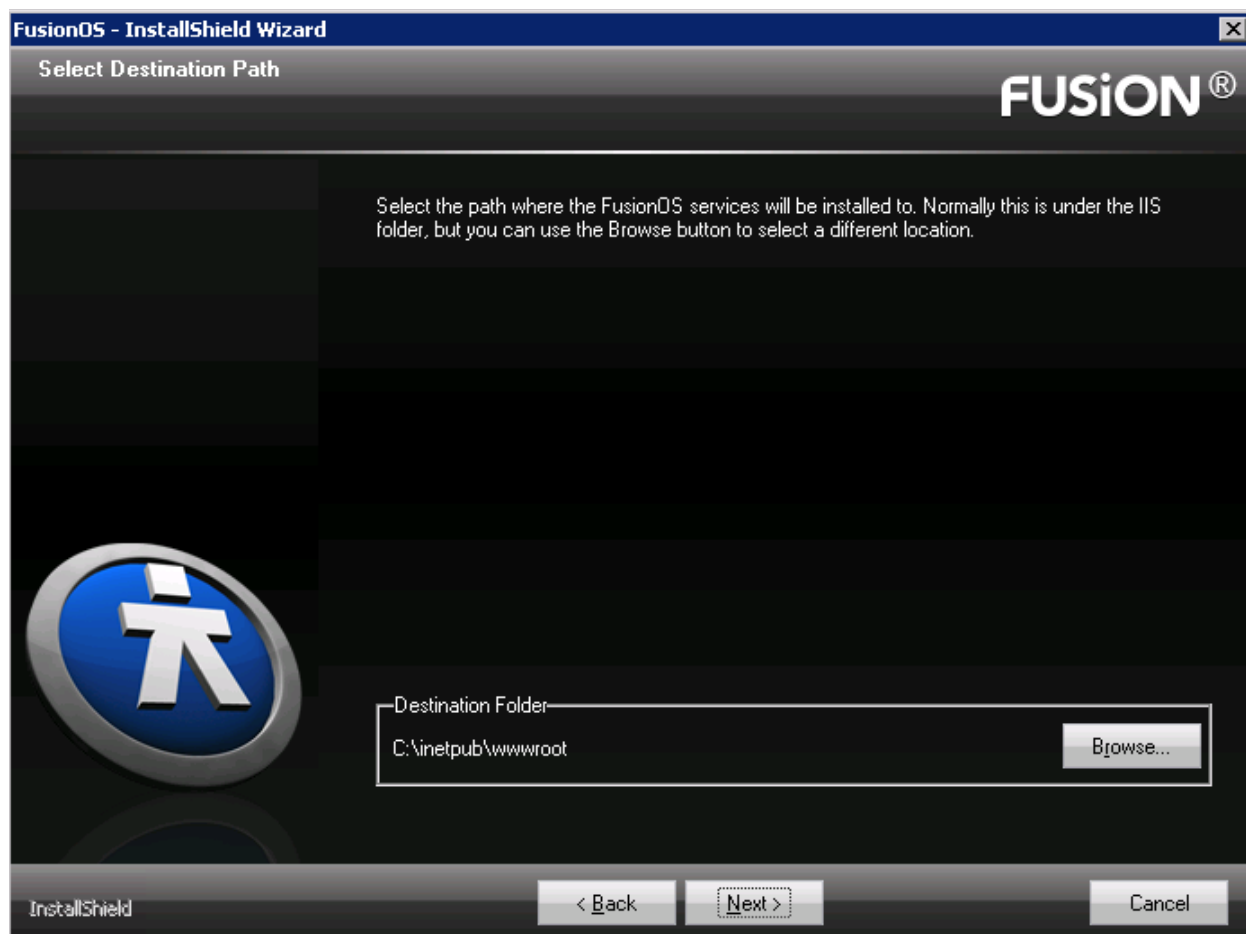
This screen states general information and requirements about the installer. See the section [Pre-Start Checklist](#) for information about installing the prerequisites. When you click Next, the installer verifies that the prerequisites are installed. Click the **Instructions** button to display the installation instructions where you will find a list of the prerequisites and instructions on how to install them.





Destination Folder

Select the directory to install the Fusion services to. By default, this is your IIS folder, C:\inetpub\wwwroot. You can change it to install to a different location if you prefer. The install will create a folder under the selected folder where the service files will be installed.

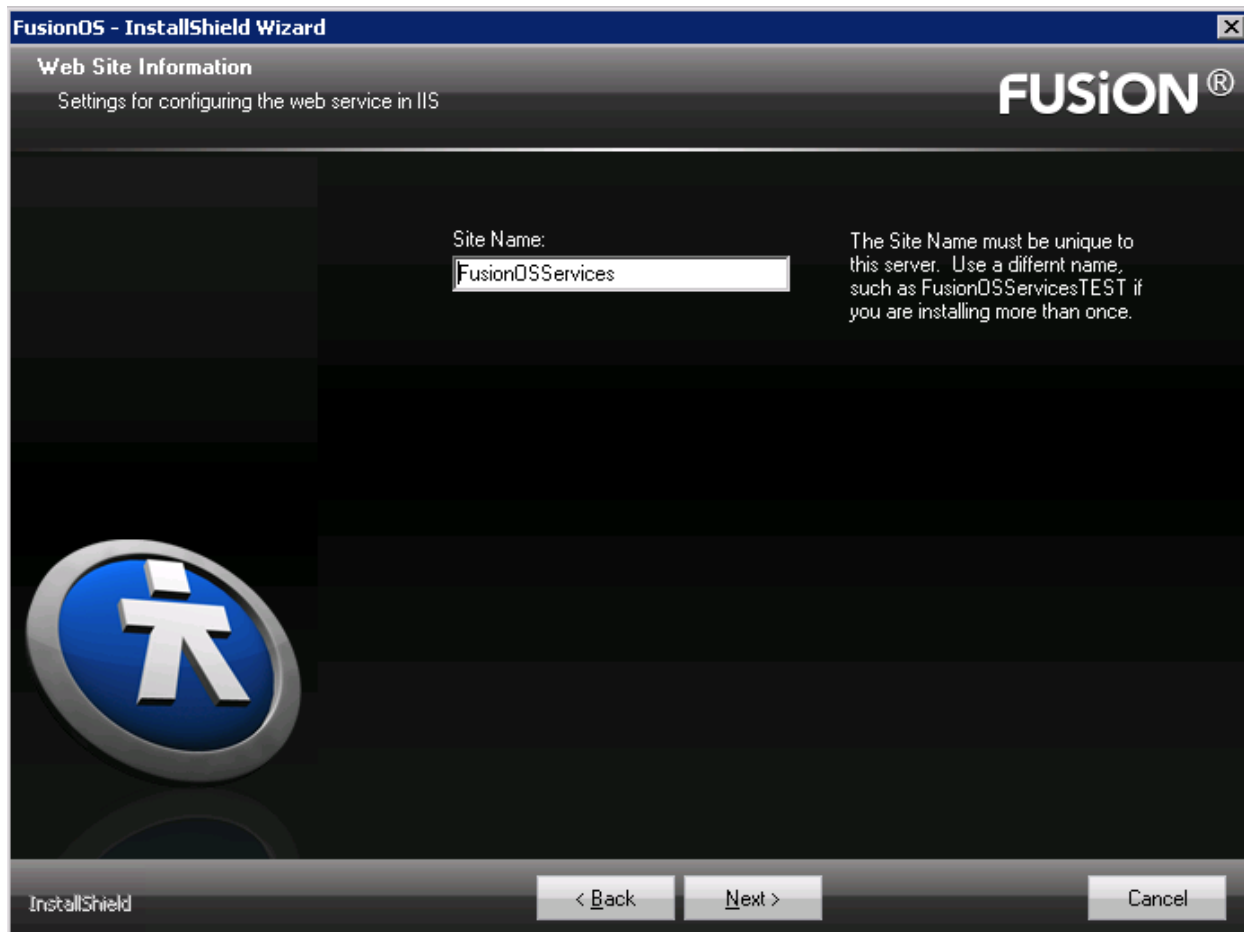




Site Name

Enter a name for the Fusion services. By default, this is FusionOSServices.

You can have more than one copy of the Fusion service on a machine. Each is identified by the **Site Name**. For example, you could install a second copy of Fusion for your test environment and call it FusionOSTest.





Application ID

An **Application ID** and **Application Key** will be provided to you when you purchase Fusion through SunGard. This information is from item 1 in your [Configuration Checklist](#). Both fields are required.

Description indicates the owner of the license.

FusionOS - InstallShield Wizard

Application ID

Enter your customer key provided by SunGard.

FUSION®

Application ID:

Application Key:

Description:

InstallShield

< Back Next > Cancel



Configuration Settings

Enter the ONESolution information from item 3 in your [Configuration Checklist](#). This information is used to configure the Fusion services to communicate with the ONESolution Finance Server. All fields are required.

You will need the **Domain\Username** of a user that has been granted permissions in SPSOne Server Manager.

FusionOS - InstallShield Wizard

ONESolution Configuration Settings
Please enter your information

FUSION®

Username: Please provide your ONESolution username and domain.

Domain:

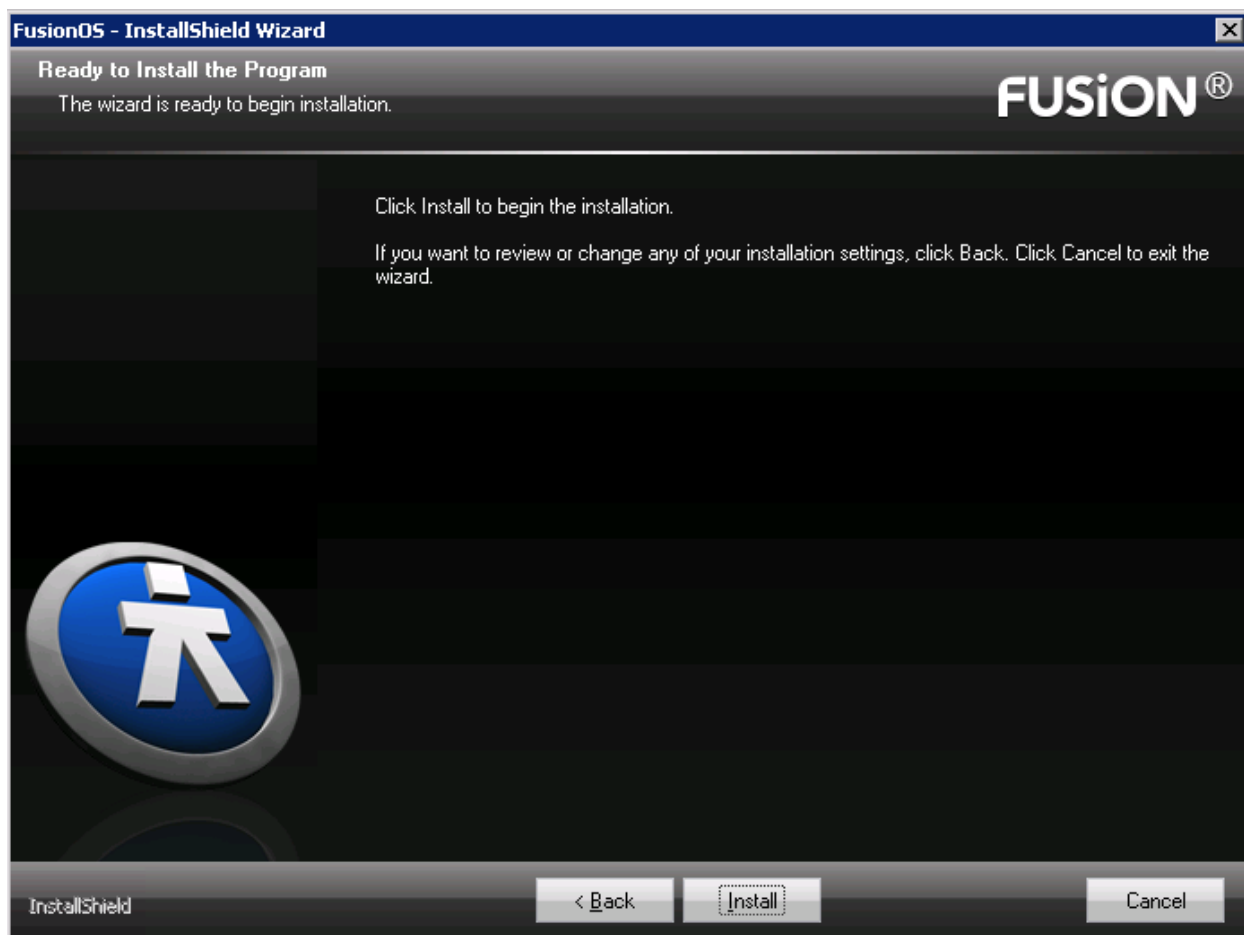
OS Finance Server Name or IP: The fully qualified server name or IP address of the OS Finance server.

InstallShield

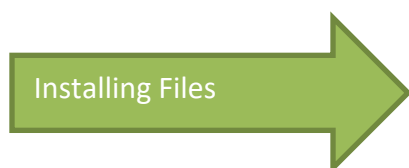
Click **Next** to continue.



Ready to Install



Click **Next** to start the installation. Follow the link to guide you to the next instructions.





To upgrade to a new version

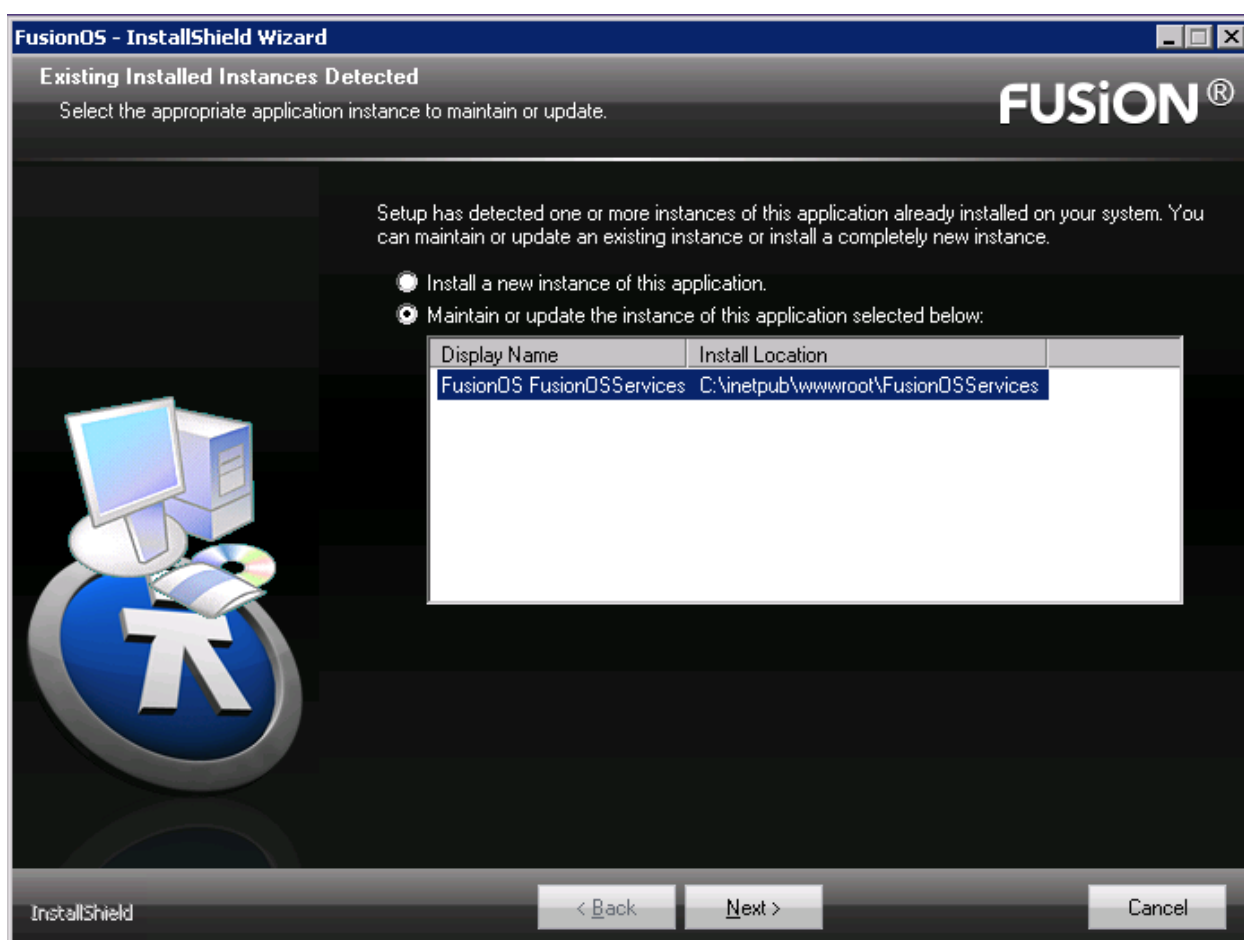
If you are running the install in order to upgrade Fusion to the latest version, this section guides you through the steps required.

Install questions

The installer displays screens to indicate it is upgrading to a new version. It does not allow you to change any of the configuration during update mode.

Multi-Instance Screen

The installation will first display the instance selection dialog shown below.

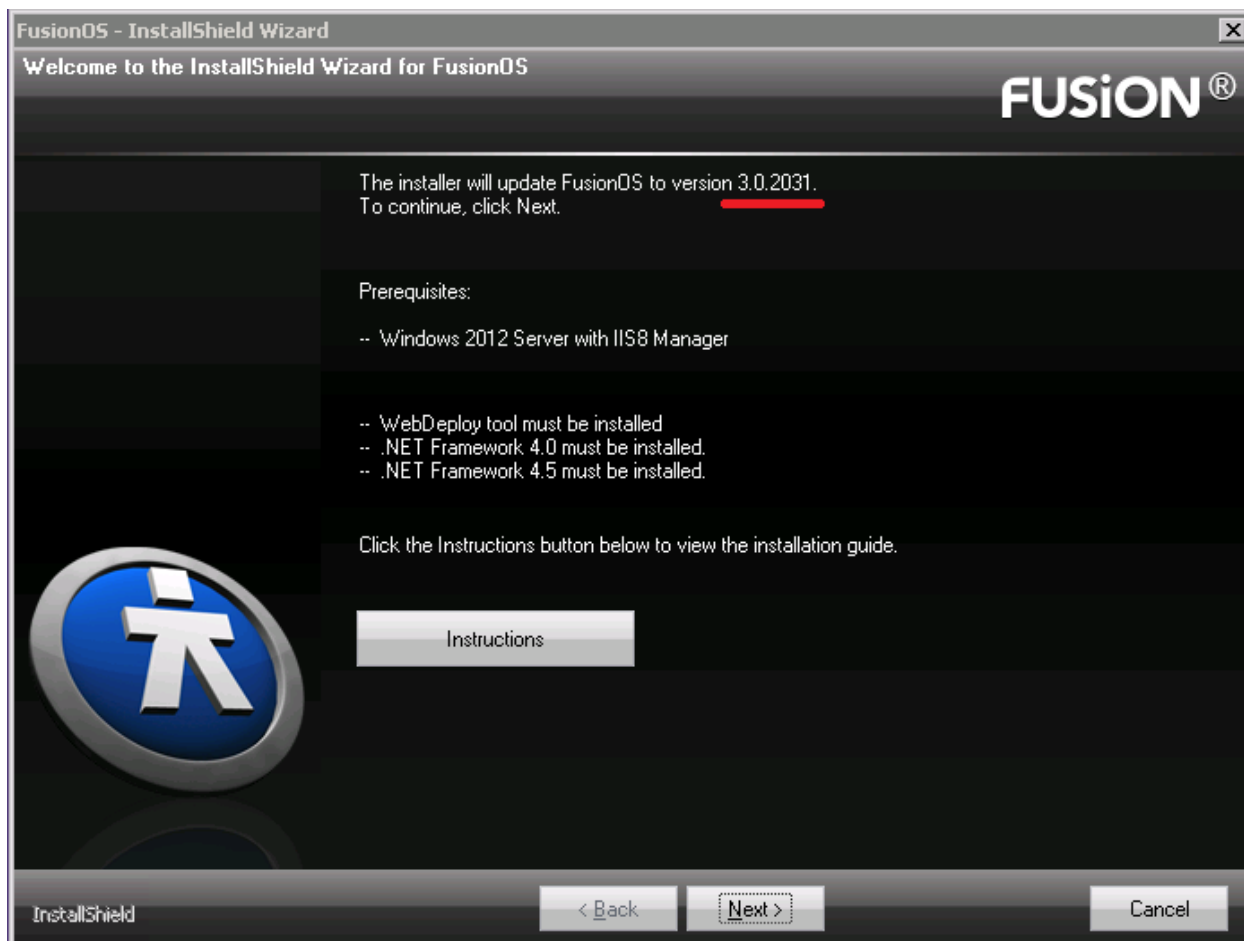


Choose the **Maintain or update the instance of this application selected below** radio button. Then select the Fusion application with the Site Name you want to update.



Welcome

This screen simply states that it will update Fusion and show the version being upgraded to.

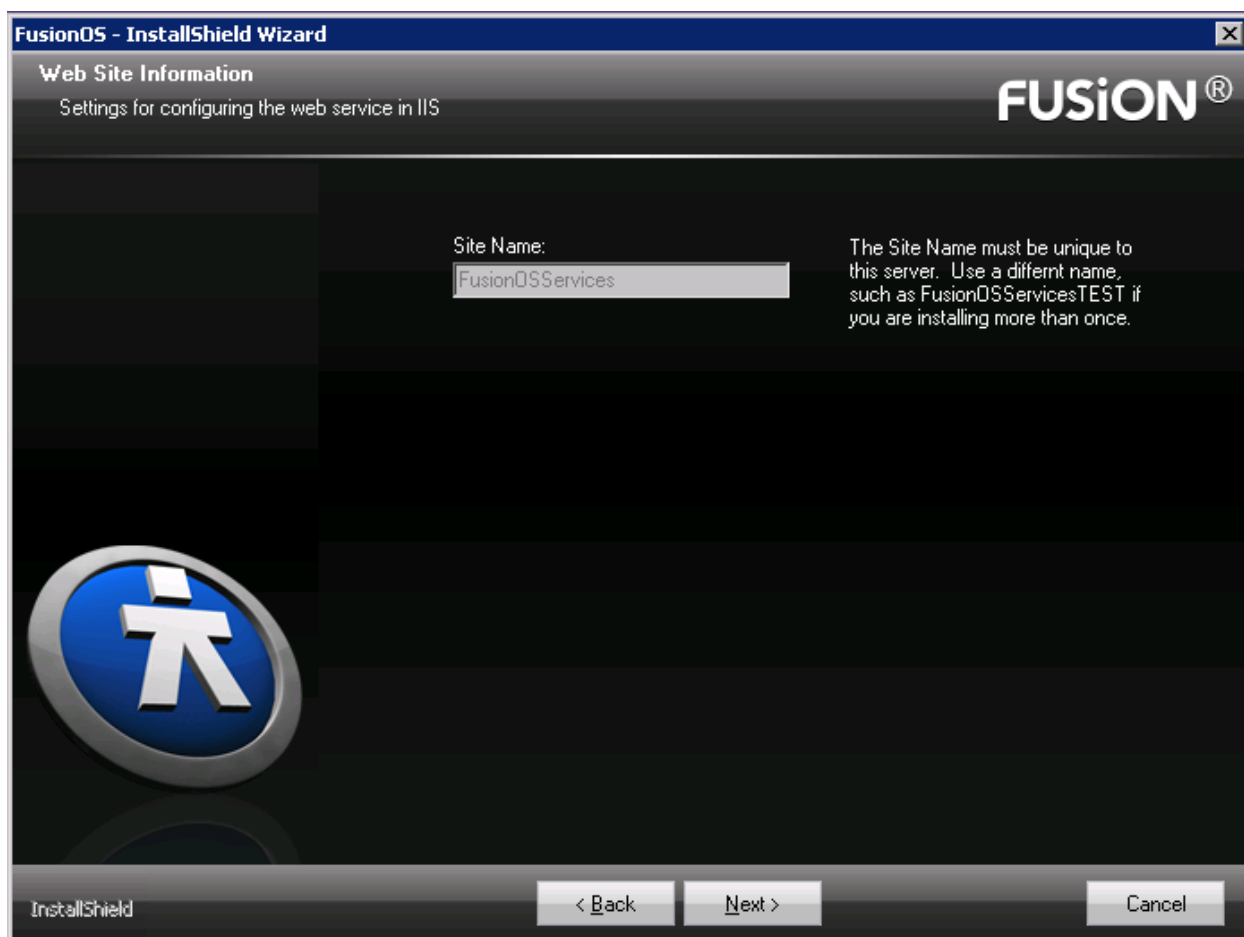


Click **Next** to start the installation. Follow the link to guide you to the next instructions.

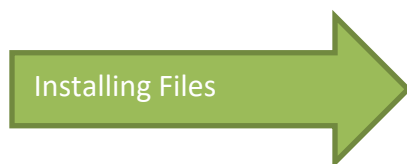


Site Information

Confirm that the **Site Name** is the correct one for the site you are trying to upgrade.



Click **Next** to start the installation. Follow the link to guide you to the next instructions.





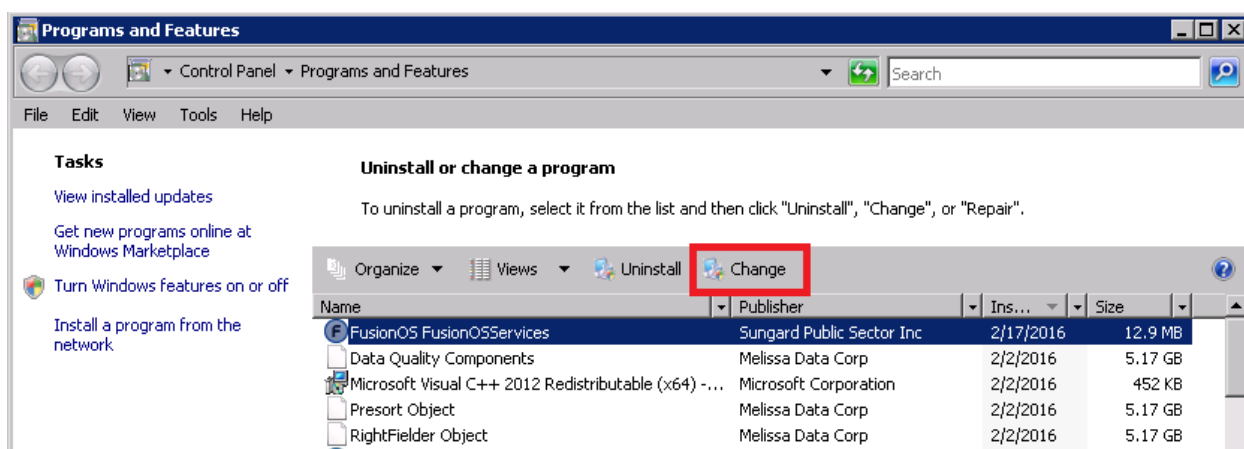
To change configuration information

If you need to change any of the configuration values from the [Configuration Checklist](#) such as changing the ONESolution domain\user, this section guides you through the steps required.

Starting the installer

You do not need the Fusion install package available to change the applications. Simply go to the **Programs and Features** option in Windows Control Panel. On the Windows **Start** menu, select **Control Panel**. Then select **Programs and Features**.

In the Programs and Features window, select the Fusion application, then click **Change**. This starts the installer.



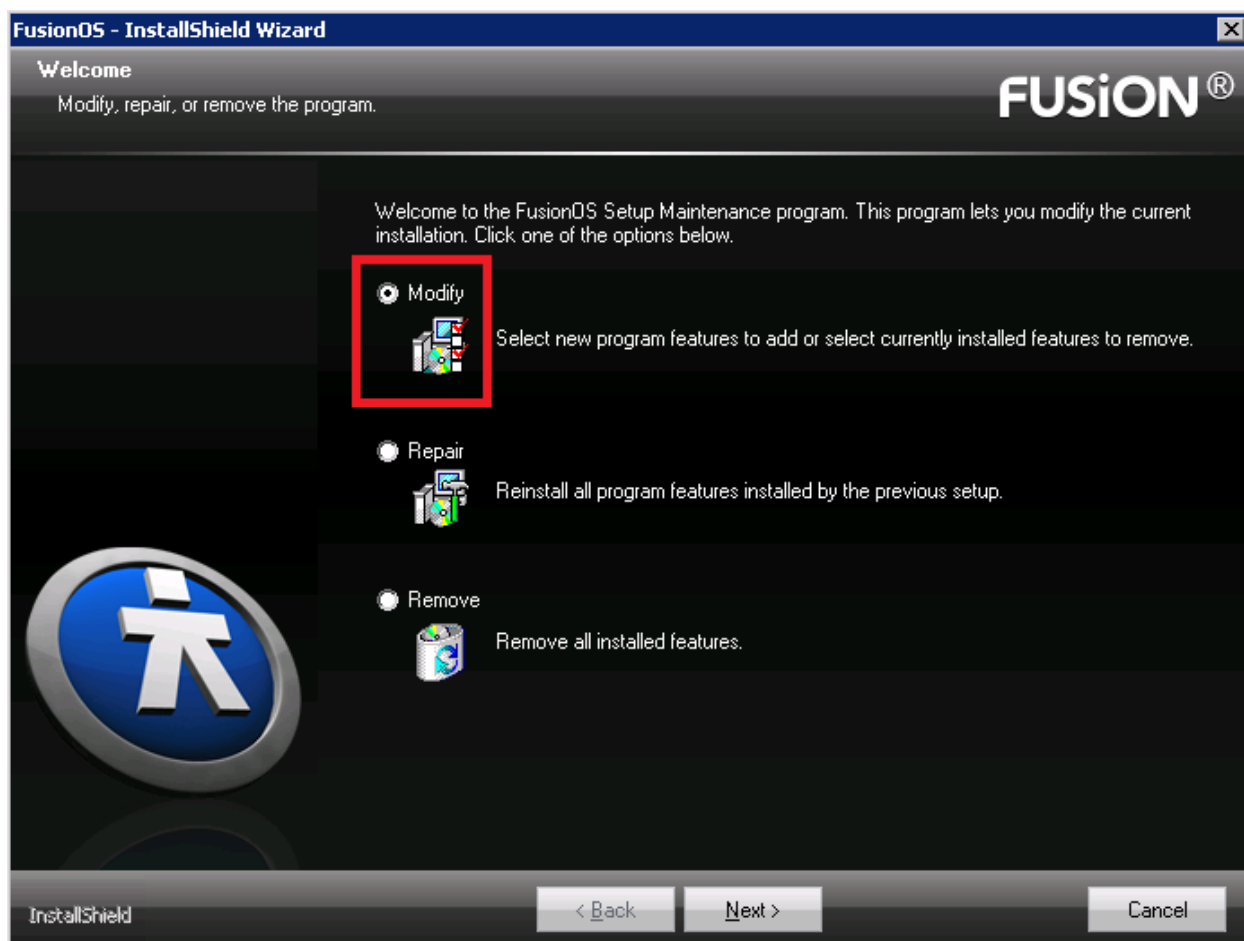


Install Questions

The installer displays screens prompting you for the information you gathered in your [Configuration Checklist](#). This section guides you through the screens presented and instructs you about how to provide the required information.

Modify / Repair / Remove

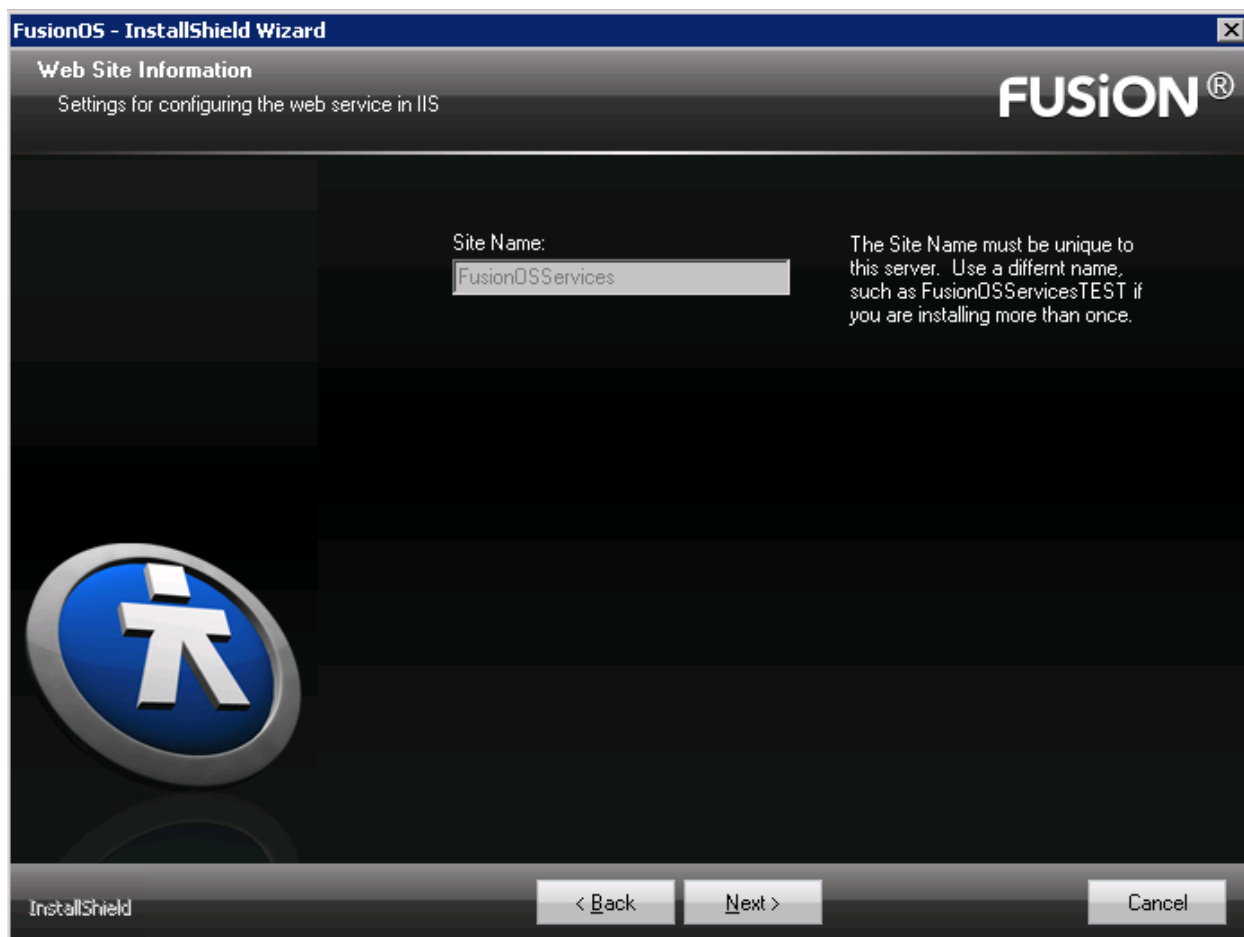
The Modify / Repair / Remove screen displays first and asks you which of these options you want to do. Choose the first option, **Modify**, to change the configuration values for the currently installed applications.





Site Information

Confirm that the **Site Name** is the correct one for the site you are trying to change.



Click **Next** to continue.



Application ID

An **Application ID and Application Key** will be provided to you when you purchase Fusion through SunGard. This information is from item 1 in your [Configuration Checklist](#). Both fields are required.

Description indicates the owner of the license.

FusionOS - InstallShield Wizard

Application ID

Enter your customer key provided by SunGard.

FUSION®

Application ID:
1a2b3c4d

Application Key:
5e6f7g8h9i0j1k2l3m4n5o6p7q8r9s

Description:
Your City

InstallShield

< Back Next > Cancel



Configuration Settings

Enter the ONESolution information from item 3 in your [Configuration Checklist](#). This information is used to configure the Fusion services to communicate with the ONESolution Finance Server. All fields are required.

You will need the **Domain\Username** of a user that has been granted permissions in SPSOne Server Manager.

FusionOS - InstallShield Wizard

ONESolution Configuration Settings

Please enter your information

FUSION®

Username:

Domain:

OS Finance Server Name or IP:

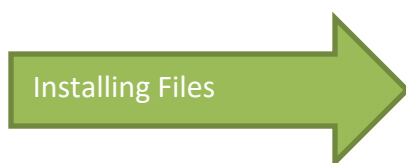
Please provide your ONESolution username and domain.

The fully qualified server name or IP address of the OS Finance server.

InstallShield

< Back Next > Cancel

Click **Next** to start the installation. Follow the link to guide you to the next instructions.





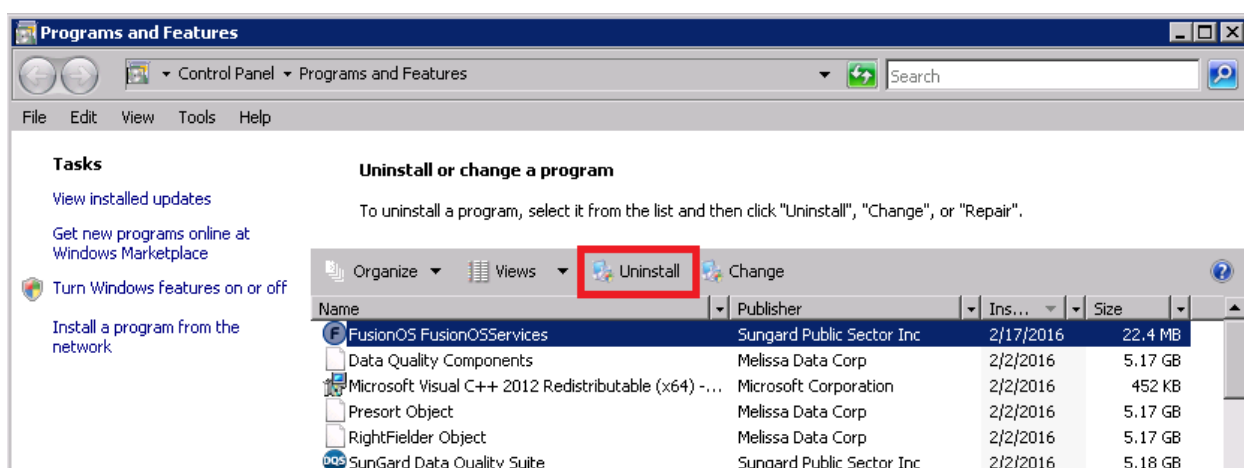
To uninstall

If you want to uninstall the Fusion services, this section guides you through the steps required.

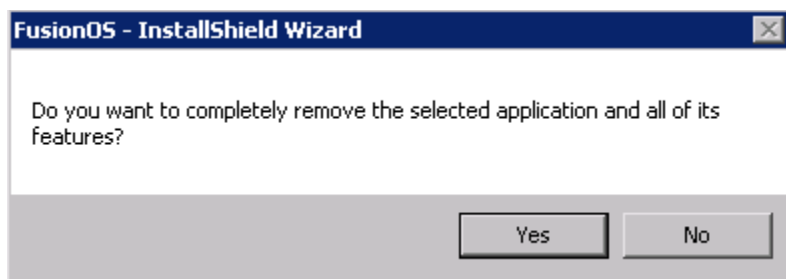
Starting the installer

You do not need the Fusion install package to change the applications. Simply go to the **Programs and Features** option in Windows Control Panel. On the Windows **Start** menu, select **Control Panel**. Then select **Programs and Features**.

In the Programs and Features window, select the Fusion application, then click **Uninstall**. This starts the installer.



Click **Yes** to confirm that you want to uninstall Fusion.

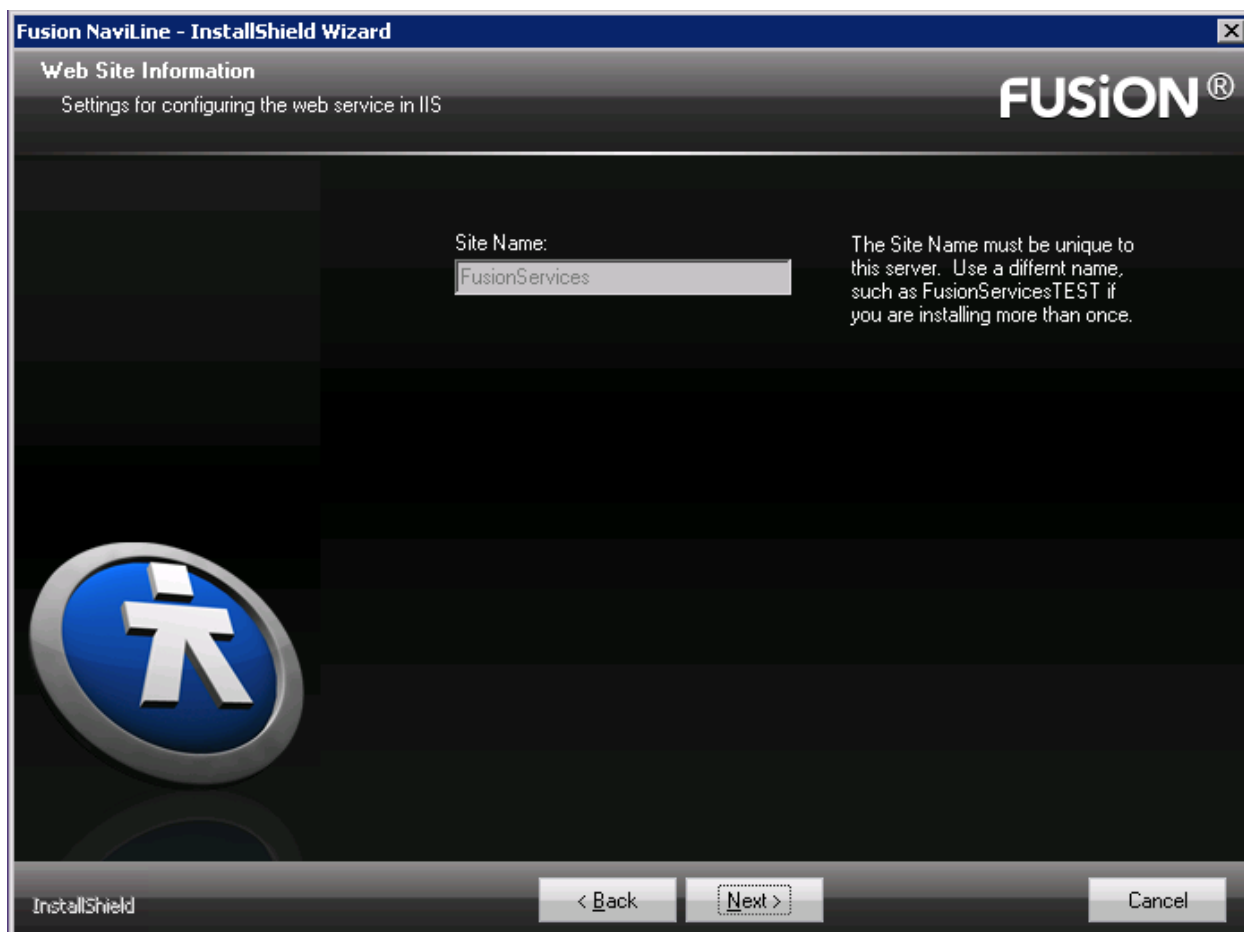




Install Questions

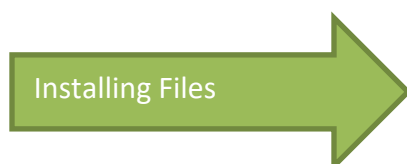
Site Information

Confirm that the **Site Name** is the correct one for the site you are trying to remove.



Click **Next** to continue.

The installer will immediately begin the uninstalling after you click Yes to confirm. It will show the progress as it is uninstalling the files.

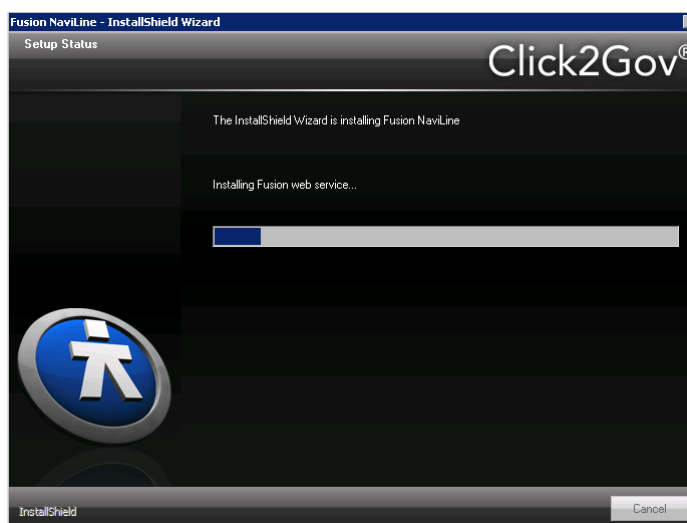




Installing Files

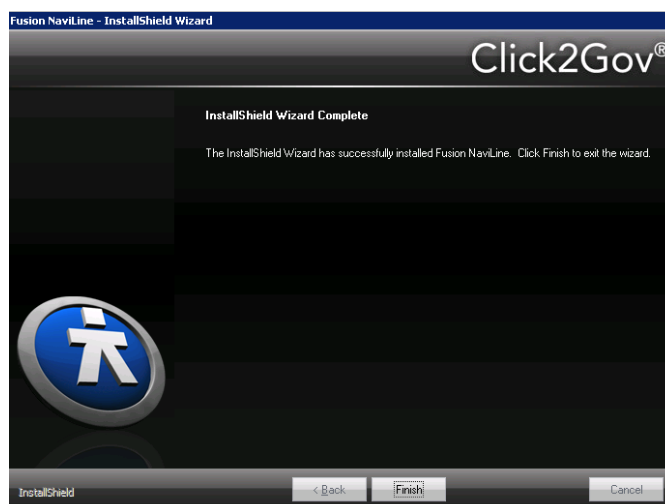
Installation

The installer will deploy the latest Fusion service files to IIS, then set the configuration values. If this is an upgrade or maintenance, then it will back up the previous files before making any changes. The installer displays what it's doing above the status bar. This should only take a few minutes.



Complete

This screen displays once the installer has completed installation and configuration.



Click **Finish** to end the installation. Follow the link to guide you to the post-install instructions.



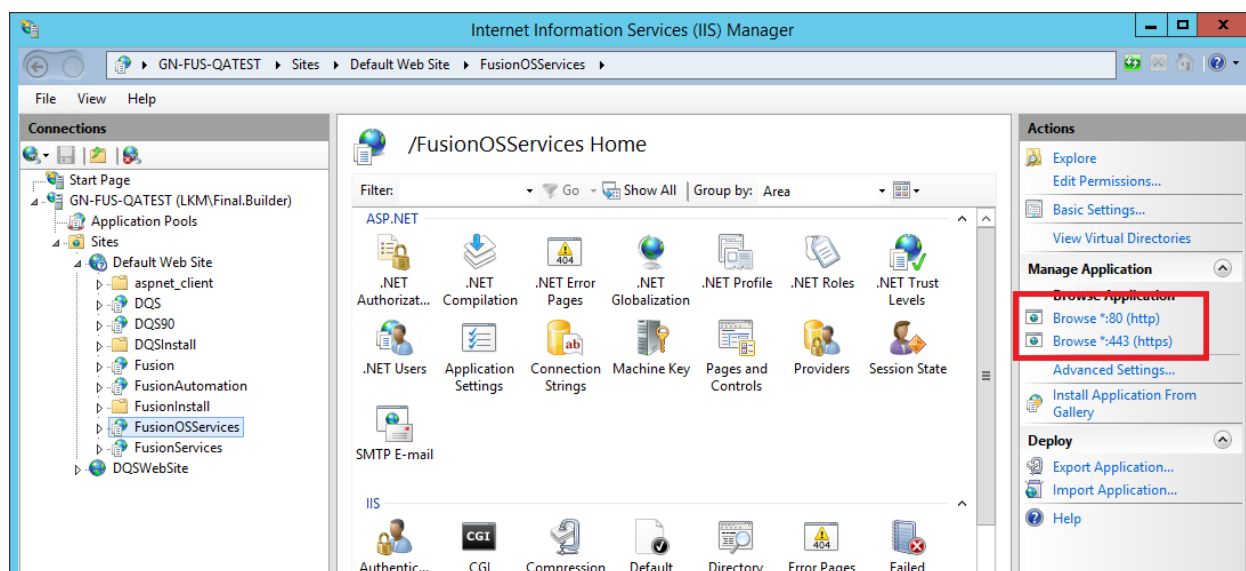


After installing

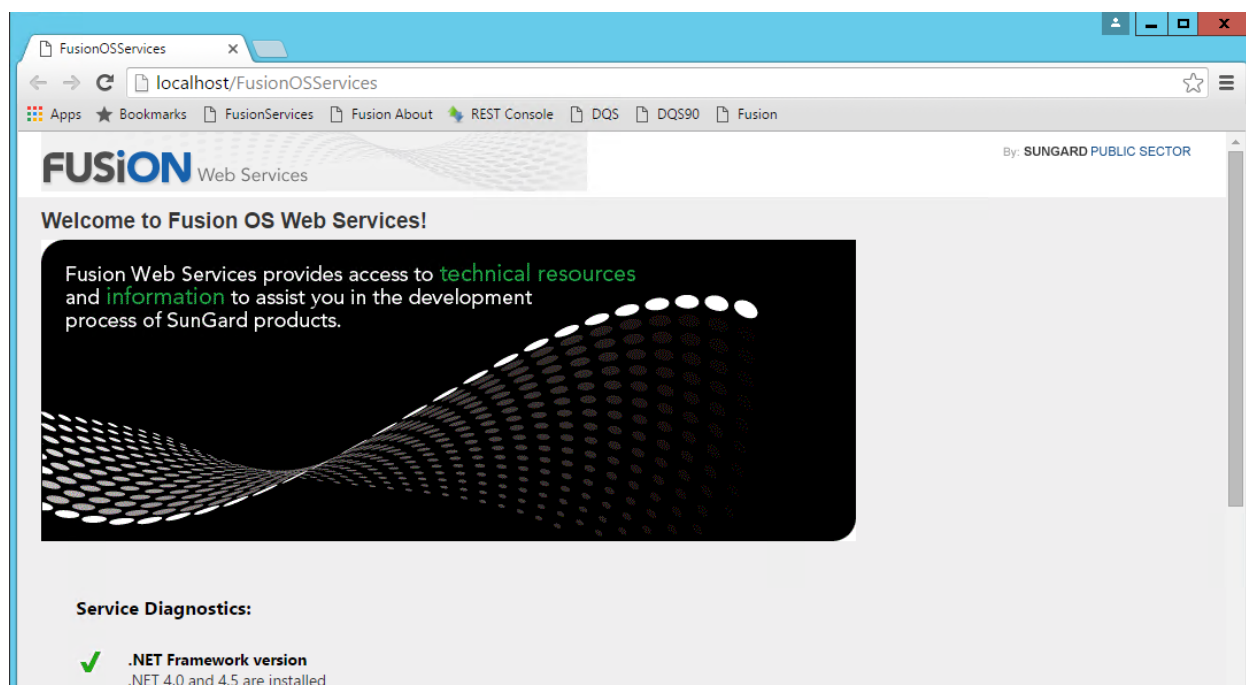
Verify the Fusion service

You can test that the Fusion service is installed by browsing it through IIS.

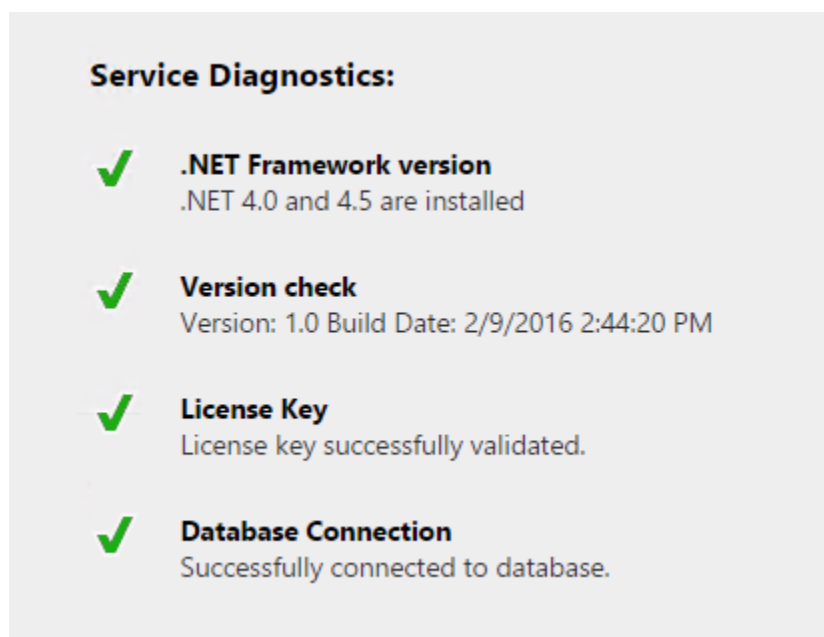
In IIS, select **FusionOSServices** under **Default Web Site**, and click **Browse** to browse the application using either http or https.



This should bring up the Fusion Web Services page.



Under the logo, there is a Service Diagnostics section. This page runs some basic diagnostic test to verify that the pre-requisites are installed, and the configuration information is correct. If any of these show an error, review the configuration information you entered during the install, or see the [Error! Reference source not found.](#) section for how to install missing prerequisites.





Verify the SSL certificate

You can also test that the Fusion service is able to respond through the https URL by entering the URL below into an IE browser:

<https://servername:443/FusionOSServices>

Verify the services are responding

To verify and test that the Fusion services are responding, use the [REST Console Extension](#).



REST Console Extension

This is a free web application available in Google Chrome that you can [Download](#) and use to test sending the service calls and see the JSON output that the services return.

The application presents a page that allows you to enter information that would normally be sent as part of the JSON request. The sections you will need to fill in values for are explained below.

Target

In the **Target** section, you will fill in the URI for the service, and selecting either GET or POST as the Request method. The URL for each service is found in the **Example** section for the method on the Fusion documentation site <http://fusion.superion.com/Fusion/>. It also indicates if it is a GET or POST method.

From Fusion documentation:

Method PostKeyLookup

Type: FusionOSServices.Controllers.AccountLookupController

Summary

Lookup a key in the ledger

Example

POST http://localhost/FusionOSServices/v1/ONESolution/AccountLookup/KeyLookup



In the REST Target:

Target

Target

Request URI

Universal Resource Identifier. ex: https://www.sample.com:9000

Request Method

The desired action to be performed on the identified resource.

Request Timeout
 seconds
Timeout in seconds before aborting.

Request URI

In the **Target** section, enter the URL into the **Request URI** field. Some of the service methods require values, such as account numbers, to be entered as part of the URL. If so, make sure the values are valid for your database, and that they are entered in the proper order.

Request Method

Select either **GET** or **POST**. The example in the Fusion documentation will indicate if it is a GET or POST method.


Example

Body

In the **Body** section, you will fill in your APP ID and APP KEY, along with any other data to be passed to the method.



Custom Headers

You will need to enter your APP ID and APP KEY into the header information. The services require this to validate your license. Click the  button to add a new field to the Custom Headers section.




Enter X-APPID as the header name, and enter your APP-ID (short code) to the right.

Enter X-APPKEY as the header name, and enter your APP-KEY (long code) to the right.

You can enter these in any order.

Custom Headers

Request Parameters

X-APPID	<input type="text"/>	
X-APPKEY	<input type="text"/>	
example: header	example: value	

body and treat the params above as query string params only.



Passing XML data

Services that use a POST request may require data to be sent to the service as XML. The XML data it needs is indicated in the **Sample Code** in the method's documentation page.

Sample Code

```
C#  
  
using System.Net;  
  
string uri = "http://localhost/FusionOSServices/v1/ONESolution/AccountLookup/KeyLookup  
".  
var xmlText = "<KeyLookupRequest><Ledger>GL</Ledger><KeyLookupParameter><Field>OrgKey<  
/Field><Operator>6</Operator><Value>101*</Value></KeyLookupParameter></KeyLookupRequest>  
</>"  
using (WebClient req = new WebClient())  
{  
    string stringResult = wc.UploadString(new Uri(uri), "POST", xmlText);  
    XmlDocument response = xmlDoc.LoadXml(stringResult);  
    // TODO  
}
```

To send XML data in the REST Console, you will need to enter the following fields:

Content Type

Set the **Content-Type** to **text/xml**

Body

Content Headers

Content-Type

text/xml

The mime type of the body of the request (used with POST and PUT requests)



Request Payload

Under **Request Payload** > **Raw Body**, click the checkbox next to the **RAW Body** text area to enable it. Enter your XML data into the text area.

Request Payload

RAW Body

```
<KeyLookupRequest>
<Ledger>GL</Ledger>
<KeyLookupParameter>
  <Field>OrgKey</Field>
  <Operator>6</Operator>
  <Value>101*</Value>
</KeyLookupParameter>
<KeyLookupParameter>
  <Field>OrgKey</Field>
  <Operator>6</Operator>
  <Value>10*</Value>
</KeyLookupParameter>
</KeyLookupRequest>
```

Send

Click on the **Send** button to submit the request. The response will be returned at the bottom of the page.



Response

Response Body

RAW Body

Response Headers

Response Preview

Request Body

Request Headers

Color Theme

Bootstrap

Force Syntax Highlighting

Auto

JSON

XML

HTML

CSS

```
<KeyLookupResults>
  <KeyLookupRecords>
    <KeyLookupRecord xmlns:xsd="http://www.w3.org/2001/XMLSchema" xmlns:xsi="http://www.w3.org/2001/XMLSchema-instance">
      <ExtensionData />
      <Ledger>GL</Ledger>
      <OrgKey>1010</OrgKey>
      <OrgKeyEndDate>2013-08-30T00:00:00</OrgKeyEndDate>
      <OrgKeyLongDesc>Some description. blah</OrgKeyLongDesc>
      <OrgKeyPart1>00</OrgKeyPart1>
      <OrgKeyPart2>AUTHORIZ</OrgKeyPart2>
      <OrgKeyPart3>10</OrgKeyPart3>
      <OrgKeyPart4>0000</OrgKeyPart4>
      <OrgKeyPart5>12</OrgKeyPart5>
      <OrgKeyPart6>BMA</OrgKeyPart6>
      <OrgKeyPart7 />
      <OrgKeyPart8 />
      <OrgKeyShortDesc>Some description</OrgKeyShortDesc>
```

Return

Follow the links to return to the top of the document.

Configuration Checklist

Return to the [Configuration Checklist](#) at the top of this document.

Installation Options

Return to the list of [Installation Options](#) to select a new option.



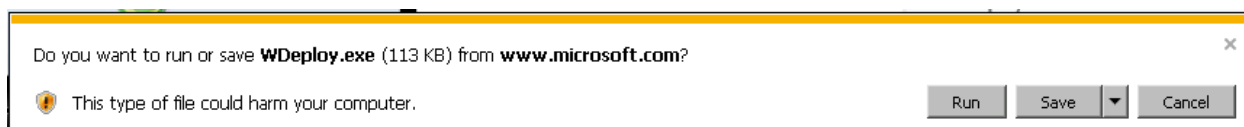
Appendix 1: Web Deploy installation for Windows 2012

Use WebPI to install Web Deploy along with its dependencies like the Web Management Service (WMSvc)

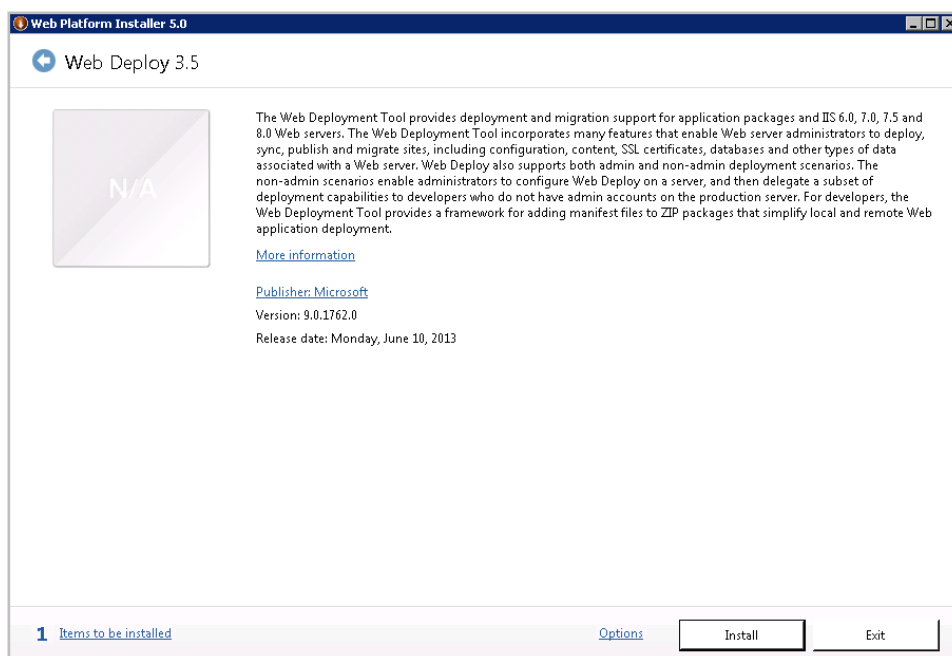
1. Click on the link below to go to the IIS Web Deploy download page.

<http://www.iis.net/downloads/microsoft/web-deploy>

2. Click on the **Install this extension** button.
3. At the bottom of the browser, it will prompt you asking if you want to run or save the WDeploy.exe. Click **Run**.



4. The Web Platform Installer will come up.



5. Click on **Install**.
6. Click on I Accept to agree to the license agreements.



7. A progress dialog will appear. Click **Finish** when done.





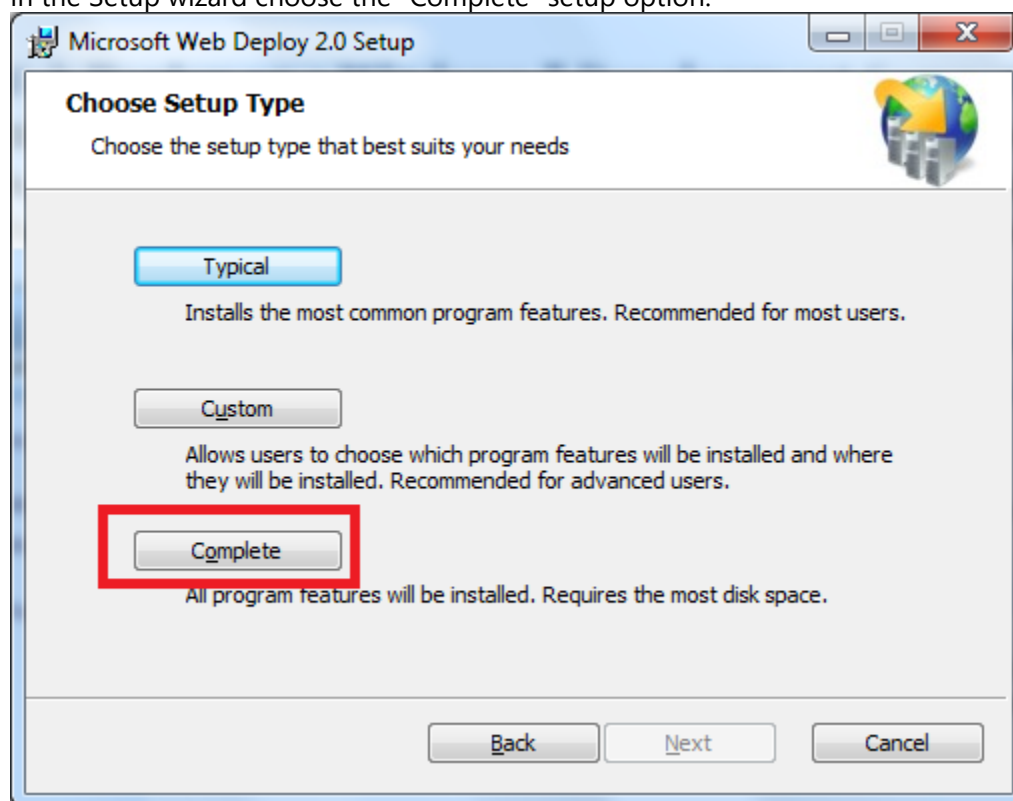
Appendix 2: Installing Web Deploy directly

If you are unable to install the Web Deploy using the Web Platform Installer as outlined in Appendix 1, you can download it directly using the instructions below.

Installing Web Deploy directly:

1. Download the Web Deploy installer directly from the [IIS.net Web Deploy page](http://www.iis.net/download/webdeploy)
<http://www.iis.net/download/webdeploy> ([x86](#) | [x64](#))

In the Setup wizard choose the "Complete" setup option.



Note: Using the MSI directly is generally not recommended for the novice user, as recommended or required dependent products must then be installed separately. The following limitations may create issues when using the MSI instead of WebPI to install Web Deploy on servers:

- The MSI will not install SQL Shared Management Objects (SMO), which is required for the SQL Server database deployments. This component may be installed using WebPI to enable SQL Server database deployments.



- The MSI will not install the Web Management Service handler component if the Web Management Service is not installed; the handler component is necessary for non-administrator deployments. Windows component IIS, including Management Service, should be installed first to enable the handler component to install.
- The MSI will not configure Web Management Service to allow non-administrator deployments if PowerShell v2 is not installed. This setup step includes creating delegation rules in the IIS server Administration.config file that allow non-administrator users to use Web Deploy. PowerShell v2 is built-in on Windows Server 2008 R2 but may require a Windows Update for Windows Server 2008. Alternatively the delegation rules may be added manually after install.

Configure a Site for Delegated Non-Administrator Deployment

After installing Web Deploy using method (1) or (2a), described above, all server-level configuration is complete for non-administrator publishing, however additional configuration is required at a site level. This site configuration can be accomplished using methods (1) or (2) described below.

1. Create a new site or set permissions on an existing Web site for a new or existing non-administrator user using Web Deploy PowerShell scripts as explained in the PowerShell scripts walkthrough [**link to be added**] OR
2. Configure publishing on an existing site for an existing user using the IIS Manager UI
 - a. Start IIS Manager (type "inetmgr.exe" in the Start Menu)
 - b. Expand the **Sites** node and right click a site, such as "test"
 - c. Click **Deploy** > **Configure for Web Deploy Publishing...**



- d. The following UI will appear. Click ...

Configure Web Deploy Publishing [?] [X]

Select a user to give publishing permissions
REDMOND\baslam [...]

Enter SQL Server connection string to be used for publishing [...]

Enter MySQL connection string to be used for publishing [...]

Specify the URL for the publishing server connection
https://BASLAMSRV:8172/msdeploy.axd

Specify a location to save the publish settings file
C:\Users\baslam\Desktop\REDMOND_baslam_Default Web S [...]

Results

[...]

[Setup] [Close]

- e. Click **Select** :

Allow User... [?] [X]

Select the type of user:

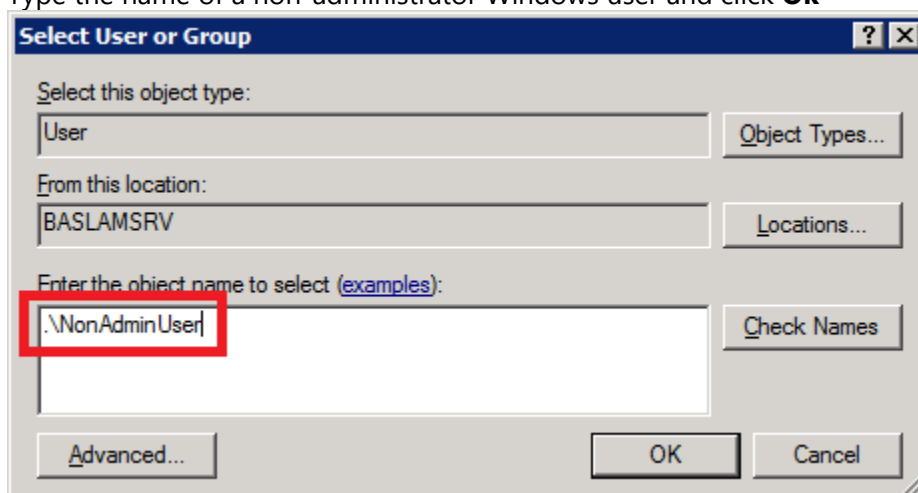
Windows
[...]
[Select...]

IIS Manager
[...]
[Select...]

[OK] [Cancel]



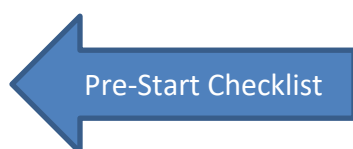
- f. Type the name of a non-administrator Windows user and click **Ok**



- g. When you click **Setup**, the following log will lines will appear:

- Publish enabled for 'NonAdminUser'
- Granted 'NonAdminUser' full control on 'C:\inetpub\wwwroot\test'
- Successfully created settings file 'C:\Users\JohnDoe\Desktop\NonAdminUser_Default Web Site.PublishSettings'

- h. The non-administrator Windows user (NonAdminUser) may now publish to the site (test).

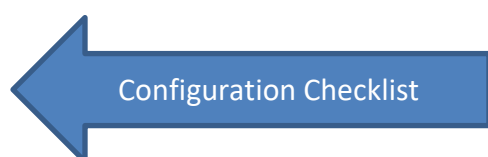




Troubleshooting: Manually setting configuration values

If the install gives errors that it cannot write or save values to one of the configuration files, then it can be edited manually after the install. The install log should indicate what file it was unable to write to. This section lists the files and values that need to be set. You can open the named and manually set the value if needed.

The tables below list the [Configuration Checklist](#) items to get your values from, and in the **Key/Value** column it gives the section of code for where to set that value in the file. Searching on the keyword highlighted in light blue will help you find the section in the file. Replace the value highlighted in yellow with the value from your [Configuration Checklist](#).



Web.config

This is the configuration file for the Fusion web service. This file is located at:

C:\inetpub\wwwroot\FusionOSServices\Web.config

Configuration Item	Key/Value
ONESolution Finance Server Configuration List: 3b	<code><add key="OSFinServer" value="ServerName"/></code>
ONESolution user name Configuration List: 3a	<code><add key="username" value="MyUser"/></code>
ONESolution domain name Configuration List: 3a	<code><add key="domain" value="MyDomain"/></code>
App ID Configuration List: 1a	<code><add key="SPS:AppID1" value="yourAppID"/></code>
App Key Configuration List: 1a	<code><add key="SPS:AppKey1" value="yourAppKey"/></code>
Key Description Configuration List: 1a	<code><add key="SPS:KeyDesc1" value="yourCityName"/></code>